

PACO47998

Product Information

Size:

50ug

Reactivity:

Human

Source:

Rabbit

Isotype:

IgG

Applications:

ELISA, IHC, IF

Recommended dilutions:

ELISA:1:2000-1:10000, IHC:1:20-1:200,
IF:1:50-1:200

Protein Background:

Gene ID:

WFDC8

Uniprot

Q8IUAA0

Synonyms:

WAP four-disulfide core domain protein 8 (Putative protease inhibitor WAP8), WFDC8, C20orf170 WAP8

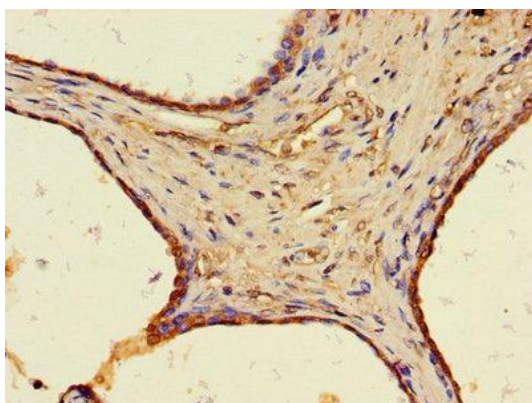
Immunogen:

Recombinant Human WAP four-disulfide core domain protein 8 protein (44-94AA).

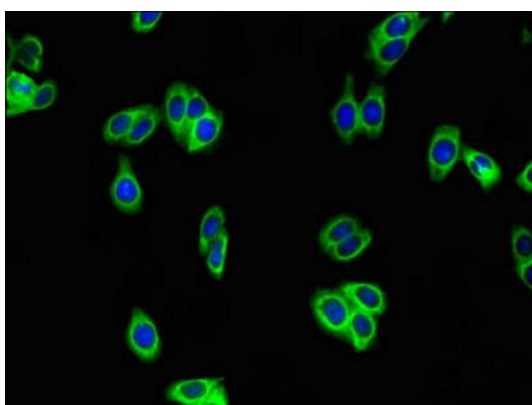
Storage:

Preservative: 0.03% Proclin 300. Constituents: 50% Glycerol, 0.01M PBS, PH 7.4

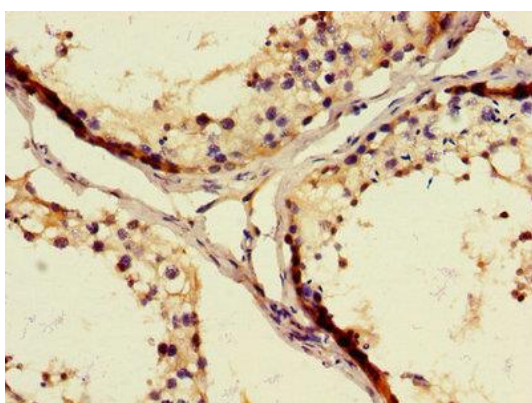
Product Images



Immunohistochemistry of paraffin-embedded human prostate cancer using PACO47998 at dilution of 1:100.



Immunofluorescent analysis of HepG2 cells using PACO47998 at dilution of 1:100 and Alexa Fluor 488-conjugated AffiniPure Goat Anti-Rabbit IgG(H+L).



Immunohistochemistry of paraffin-embedded human testis tissue using PACO47998 at dilution of 1:100.