

# PKD1L3 Antibody



PACO47974

---

## Product Information

**Size:**

50ug

**Reactivity:**

Human

**Source:**

Rabbit

**Isotype:**

IgG

**Applications:**

ELISA, IHC, IF

**Recommended dilutions:**

ELISA:1:2000-1:10000, IHC:1:20-1:200,  
IF:1:50-1:200

**Protein Background:**

Component of a calcium channel. May act as a sour taste receptor by forming a calcium channel with PKD1L3 in gustatory cells; however, its contribution to sour taste perception is unclear in vivo and may be indirect.

**Gene ID:**

PKD1L3

**Uniprot**

Q7Z443

**Synonyms:**

Polycystic kidney disease protein 1-like 3 (PC1-like 3 protein) (Polycystin-1L3), PKD1L3

**Immunogen:**

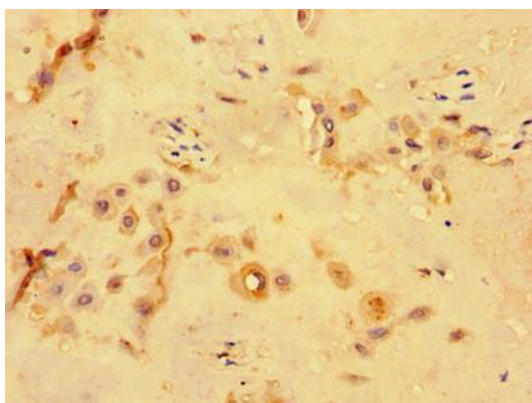
Recombinant Human Polycystic kidney disease protein 1-like 3 protein (22-194AA).

**Storage:**

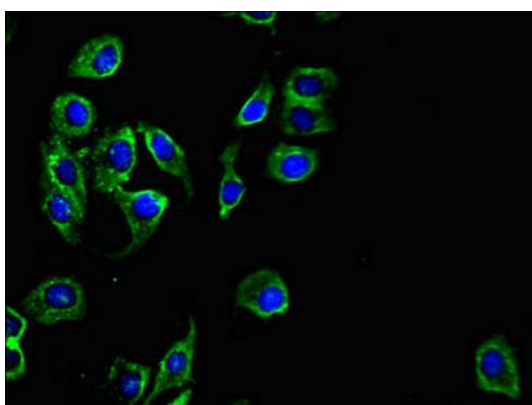
Preservative: 0.03% Proclin 300. Constituents: 50% Glycerol, 0.01M PBS, PH 7.4

## Product Images

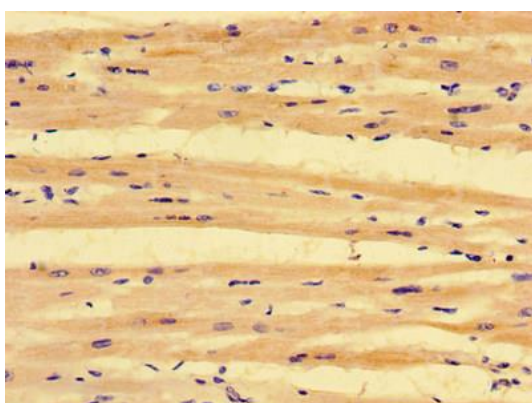
---



Immunohistochemistry of paraffin-embedded human placenta tissue using PACO47974 at dilution of 1:100.



Immunofluorescent analysis of A549 cells using PACO47974 at dilution of 1:100 and Alexa Fluor 488-conjugated AffiniPure Goat Anti-Rabbit IgG(H+L).



Immunohistochemistry of paraffin-embedded human heart tissue using PACO47974 at dilution of 1:100.