

GPR179 Antibody



PACO47966

Product Information

Size:

50ug

Reactivity:

Human

Source:

Rabbit

Isotype:

IgG

Applications:

ELISA, IHC, IF

Recommended dilutions:

ELISA:1:2000-1:10000, IHC:1:20-1:200,
IF:1:50-1:200

Protein Background:

Orphan receptor, involved in vision. Required for signal transduction through retinal depolarizing bipolar cells.

Gene ID:

GPR179

Uniprot

Q6PRD1

Synonyms:

Probable G-protein coupled receptor 179 (Probable G-protein coupled receptor 158-like 1) (GPR158-like), GPR179, GPR158L GPR158L1

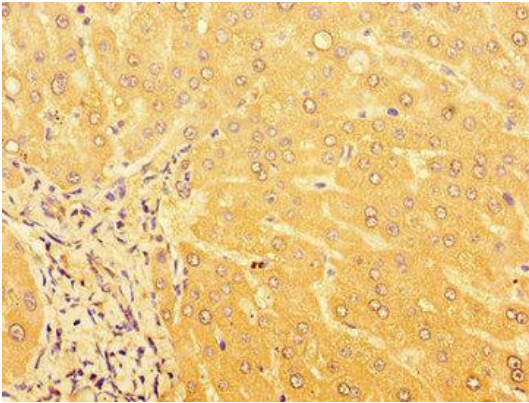
Immunogen:

Recombinant Human Probable G-protein coupled receptor 179 protein (1440-1671AA).

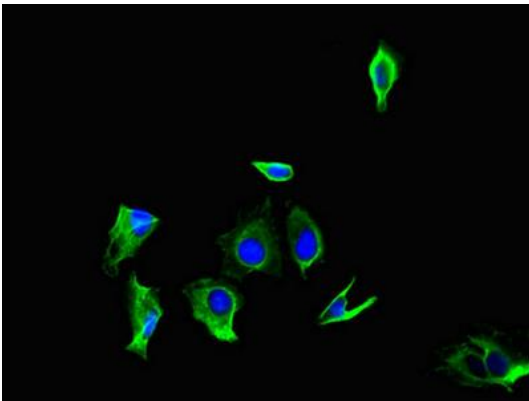
Storage:

Preservative: 0.03% Proclin 300. Constituents: 50% Glycerol, 0.01M PBS, PH 7.4

Product Images



Immunohistochemistry of paraffin-embedded human liver tissue using PACO47966 at dilution of 1:100.



Immunofluorescent analysis of HeLa cells using PACO47966 at dilution of 1:100 and Alexa Fluor 488-conjugated AffiniPure Goat Anti-Rabbit IgG(H+L).