

PACO47962

Product Information

Size:

50ug

Reactivity:

Human, Mouse

Source:

Rabbit

Isotype:

IgG

Applications:

ELISA, WB, IHC, IF

Recommended dilutions:

ELISA:1:2000-1:10000, WB:1:1000-1:5000,
IHC:1:20-1:200, IF:1:50-1:200

Protein Background:

Substrate-recognition component of the SCF (SKP1-CUL1-F-box protein)-type E3 ubiquitin ligase complex. Promotes ubiquitination of sarcomeric proteins alpha-actinin-2 (ACTN2) and filamin-C (FLNC).

Gene ID:

FBXL22

Uniprot

Q6P050

Synonyms:

F-box and leucine-rich protein 22, FBXL22

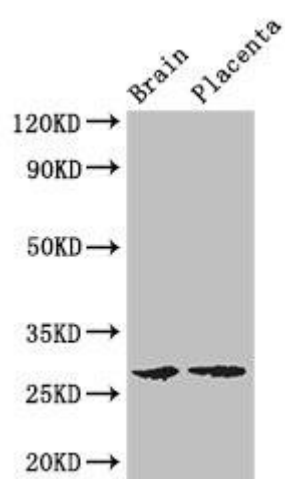
Immunogen:

Recombinant Human F-box and leucine-rich protein 22 protein (123-229AA).

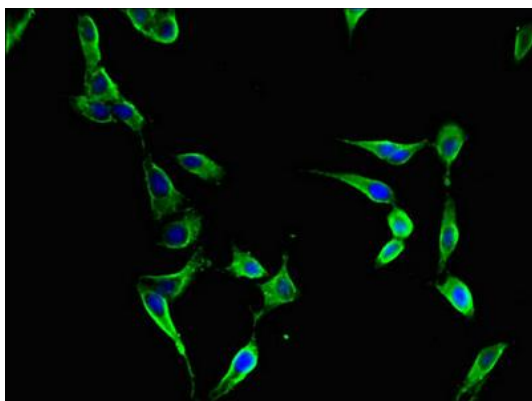
Storage:

Preservative: 0.03% Proclin 300. Constituents: 50% Glycerol, 0.01M PBS, PH 7.4

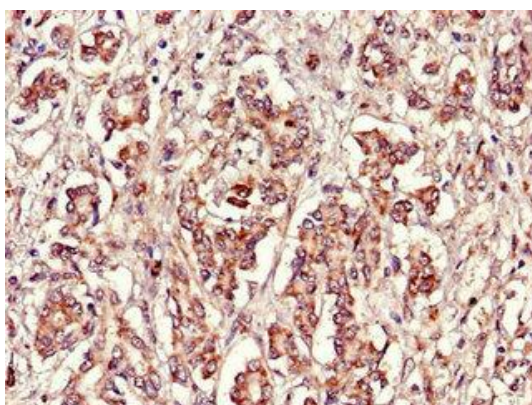
Product Images



Western Blot. Positive WB detected in: Mouse brain tissue, Human placenta tissue. All lanes: FBXL22 antibody at 3 μ g/ml. Secondary: Goat polyclonal to rabbit IgG at 1/50000 dilution. Predicted band size: 28 kDa. Observed band size: 28 kDa.



Immunofluorescent analysis of HeLa cells using PACO47962 at dilution of 1:100 and Alexa Fluor 488-conjugated AffiniPure Goat Anti-Rabbit IgG(H+L).



Immunohistochemistry of paraffin-embedded human pancreatic cancer using PACO47962 at dilution of 1:100.