

Product Information

Size:

50ug

Reactivity:

Human, Mouse

Source:

Rabbit

Isotype:

IgG

Applications:

ELISA, WB, IHC

Recommended dilutions:

ELISA:1:2000-1:10000, WB:1:1000-1:5000,
IHC:1:20-1:200

Protein Background:

Can stimulate E2F-dependent transcription. Binds DNA cooperatively with E2F family members through the E2 recognition site, 5'-TTTC[CG]CGC-3', found in the promoter region of a number of genes whose products are involved in cell cycle regulation or in DNA replication. The TFDP2: E2F complex functions in the control of cell-cycle progression from G1 to S phase. The E2F1: DP complex appears to mediate both cell proliferation and apoptosis. Blocks adipocyte differentiation by repressing CEBPA binding to its target gene promoters.

Gene ID:

TFDP2

Uniprot

Q14188

Synonyms:

Transcription factor Dp-2 (E2F dimerization partner 2), TFDP2, DP2

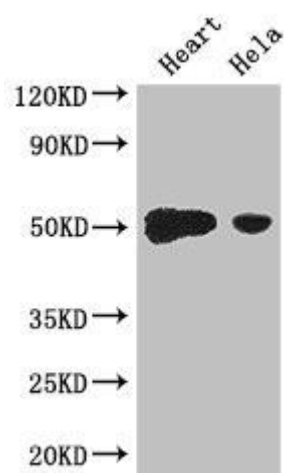
Immunogen:

Recombinant Human Transcription factor Dp-2 protein (344-386AA).

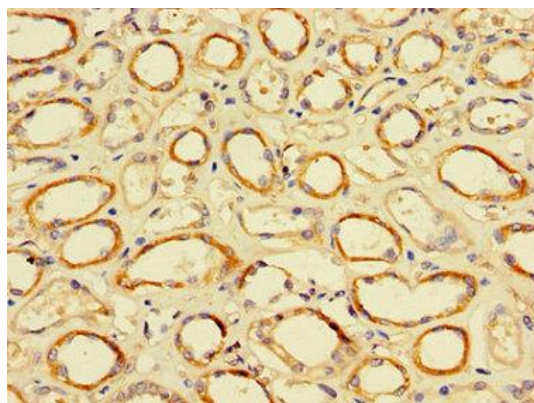
Storage:

Preservative: 0.03% Proclin 300. Constituents: 50% Glycerol, 0.01M PBS, PH 7.4

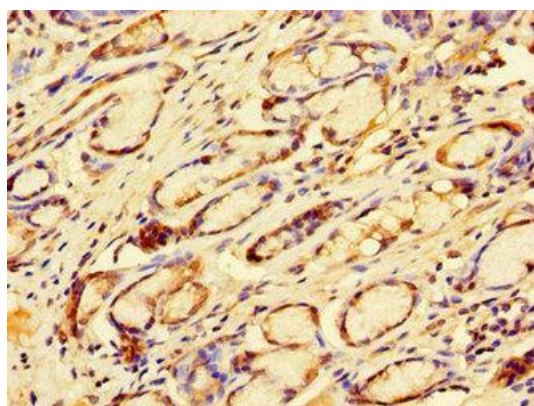
Product Images



Western Blot. Positive WB detected in: Mouse heart tissue, HeLa whole cell lysate. All lanes: TFDP2 antibody at 3.2 μ g/ml. Secondary. Goat polyclonal to rabbit IgG at 1/50000000 dilution. Predicted band size: 50, 41, 42, 43, 40, 35, 47 kDa. Observed band size: 50 kDa.



Immunohistochemistry of paraffin-embedded human kidney tissue using PACO47910 at dilution of 1:100.



Immunohistochemistry of paraffin-embedded human gastric cancer using PACO47910 at dilution of 1:100.