

PACO47846

Product Information

Size:

50ug

Reactivity:

Human

Source:

Rabbit

Isotype:

IgG

Applications:

ELISA, IHC

Recommended dilutions:

ELISA:1:2000-1:10000, IHC:1:20-1:200

Protein Background:

Key regulator of kinetochore function during meiosis I: required both for mono-orientation of kinetochores on sister chromosomes and protection of centromeric cohesin from separase-mediated cleavage. Acts by facilitating kinetochore mono-orientation during meiosis I, when kinetochores on sister chromosomes face the same direction and are thus captured and pulled by spindle fibers from the same pole. Also required to prevent cleavage of cohesin at centromeres during meiosis I, possibly by acting as a regulator of the shugoshin-dependent protection pathway. Acts in collaboration with PLK1: required for PLK1 enrichment to kinetochores. Not required during meiosis II or mitosis.

Gene ID:

MEIKIN

Uniprot

A0A087WXM9

Synonyms:

Meiosis-specific kinetochore protein, MEIKIN

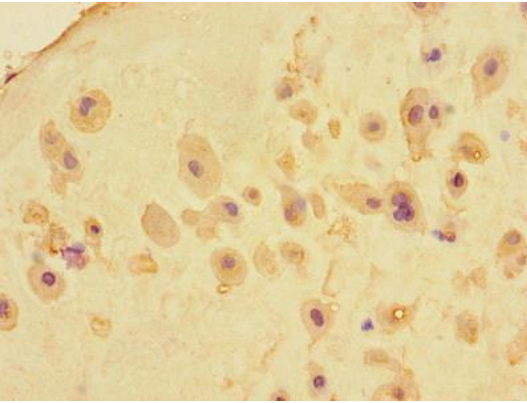
Immunogen:

Recombinant Human Meiosis-specific kinetochore protein (18-91AA).

Storage:

Preservative: 0.03% Proclin 300. Constituents: 50% Glycerol, 0.01M PBS, PH 7.4

Product Images



Immunohistochemistry of paraffin-embedded human placenta tissue using PACO47846 at dilution of 1:100.