

# SRGAP2B Antibody



PACO47842

---

## Product Information

**Size:**

50ug

**Reactivity:**

Human, Mouse

**Source:**

Rabbit

**Isotype:**

IgG

**Applications:**

ELISA, WB, IF

**Recommended dilutions:**

ELISA:1:2000-1:10000, WB:1:1000-1:5000,  
IF:1:50-1:200

**Protein Background:**

May regulate cell migration and differentiation through interaction with and inhibition of SRGAP2.

**Gene ID:**

SRGAP2B

**Uniprot**

P0DMP2

**Synonyms:**

SLIT-ROBO Rho GTPase-activating protein 2B (SLIT-ROBO Rho GTPase activating protein 2 pseudogene 2), SRGAP2B, SRGAP2P2

**Immunogen:**

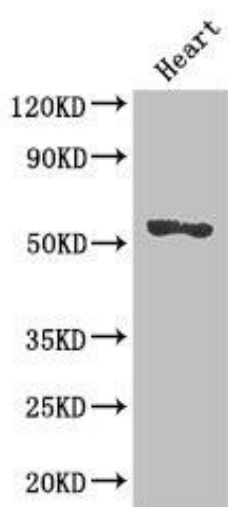
Recombinant Human SLIT-ROBO Rho GTPase-activating protein 2B protein (79-150AA).

**Storage:**

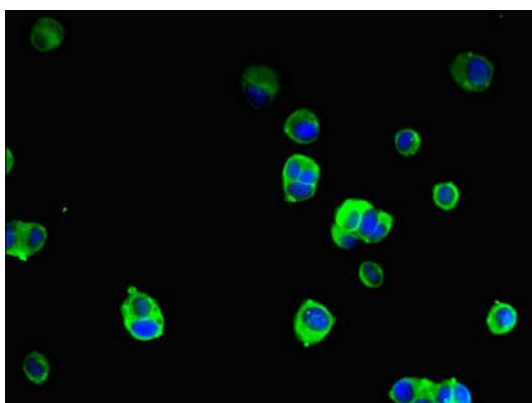
Preservative: 0.03% Proclin 300. Constituents: 50% Glycerol, 0.01M PBS, PH 7.4

## Product Images

---



Western Blot. Positive WB detected in: Mouse heart tissue. All lanes: SRGAP2B antibody at 2.7 $\mu$ g/ml. Secondary. Goat polyclonal to rabbit IgG at 1/50000 dilution. Predicted band size: 54 kDa. Observed band size: 54 kDa.



Immunofluorescent analysis of MCF-7 cells using PACO47842 at dilution of 1:100 and Alexa Fluor 488-conjugated AffiniPure Goat Anti-Rabbit IgG(H+L).