

PACO47770

Product Information

Size:

50ug

Reactivity:

Human, Mouse

Source:

Rabbit

Isotype:

IgG

Applications:

ELISA, WB, IHC, IF

Recommended dilutions:

ELISA:1:2000-1:10000, WB:1:2000-1:5000,
IHC:1:20-1:200, IF:1:50-1:200

Protein Background:

cytoskeleton, cytosol, extracellular exosome, cytoskeletal protein binding, fructose-bisphosphate aldolase activity, canonical glycolysis, epithelial cell differentiation, fructose 1,6-bisphosphate metabolic process, fructose metabolic process, gluconeogenesis.

Gene ID:

ALDOC

Uniprot

P09972

Synonyms:

Fructose-bisphosphate aldolase C (EC 4.1.2.13) (Brain-type aldolase), ALDOC, ALDC

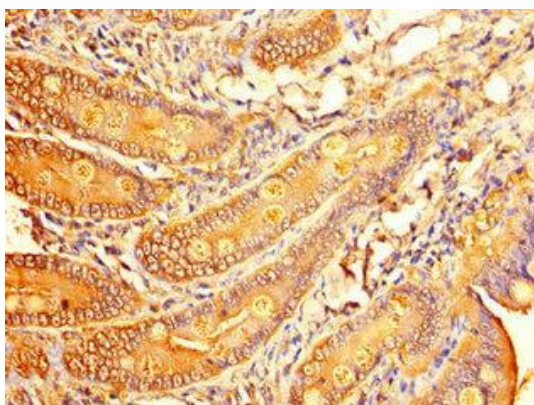
Immunogen:

Recombinant Human Fructose-bisphosphate aldolase C protein (190-354AA).

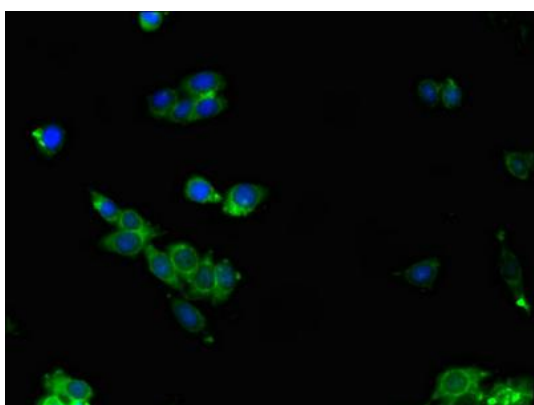
Storage:

Preservative: 0.03% Proclin 300. Constituents: 50% Glycerol, 0.01M PBS, PH 7.4

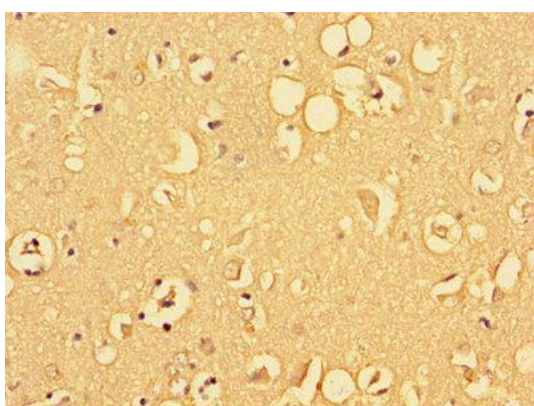
Product Images



Immunohistochemistry of paraffin-embedded human small intestine tissue using PACO47770 at dilution of 1:100.



Immunofluorescent analysis of HepG2 cells using PACO47770 at dilution of 1:100 and Alexa Fluor 488-conjugated AffiniPure Goat Anti-Rabbit IgG(H+L).



Immunohistochemistry of paraffin-embedded human brain tissue using PACO47770 at dilution of 1:100.