

SPINK1 Antibody



PACO47698

Product Information

Size:

50ug

Reactivity:

Human

Source:

Rabbit

Isotype:

IgG

Applications:

ELISA, IHC, IF

Recommended dilutions:

ELISA:1:2000-1:10000, IHC:1:20-1:200,
IF:1:50-1:200

Protein Background:

Serine protease inhibitor which exhibits anti-trypsin activity. In the pancreas, protects against trypsin-catalyzed premature activation of zymogens.

Gene ID:

SPINK1

Uniprot

P00995

Synonyms:

Serine protease inhibitor Kazal-type 1 (Pancreatic secretory trypsin inhibitor) (Tumor-associated trypsin inhibitor) (TATI), SPINK1, PSTI

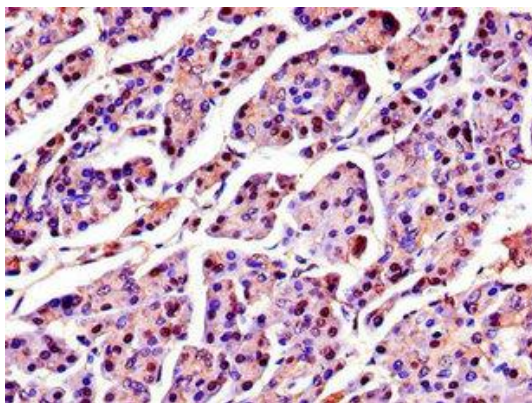
Immunogen:

Recombinant Human Serine protease inhibitor Kazal-type 1 protein (19-79AA).

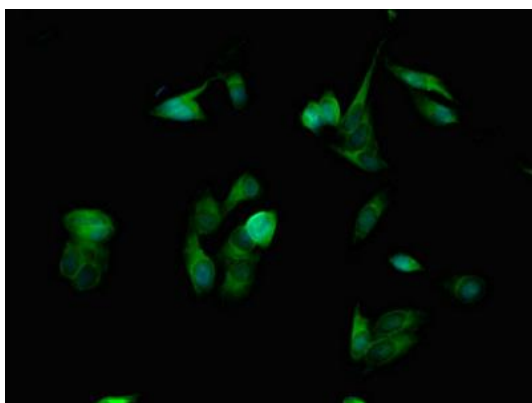
Storage:

Preservative: 0.03% Proclin 300. Constituents: 50% Glycerol, 0.01M PBS, PH 7.4

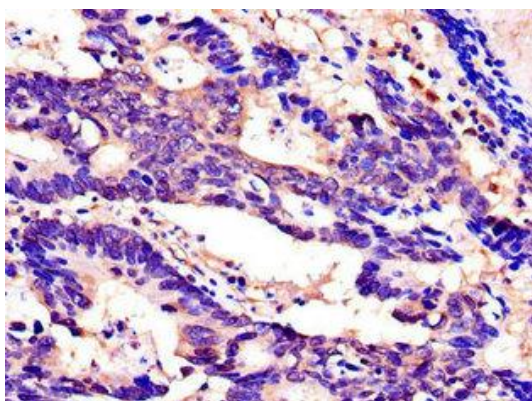
Product Images



Immunohistochemistry of paraffin-embedded human pancreatic tissue using PACO47698 at dilution of 1:100.



Immunofluorescent analysis of HeLa cells using PACO47698 at dilution of 1:100 and Alexa Fluor 488-conjugated AffiniPure Goat Anti-Rabbit IgG(H+L).



Immunohistochemistry of paraffin-embedded human colon cancer using PACO47698 at dilution of 1:100.