

PACO47678

Product Information

Size:

50ug

Reactivity:

Human

Source:

Rabbit

Isotype:

IgG

Applications:

ELISA, IHC, IF

Recommended dilutions:

ELISA:1:2000-1:10000, IHC:1:20-1:200,
IF:1:50-1:200

Protein Background:

Catalyzes the production of spermine from spermidine and decarboxylated S-adenosylmethionine (dcSAM).

Gene ID:

SMS

Uniprot

P52788

Synonyms:

Spermine synthase (SPMSY) (EC 2.5.1.22) (Spermidine aminopropyltransferase), SMS

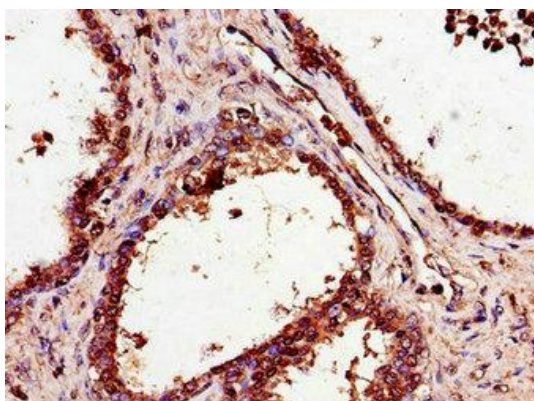
Immunogen:

Recombinant Human Spermine synthase protein (16-191AA).

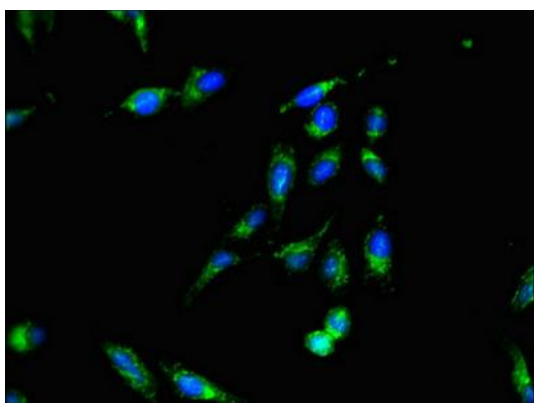
Storage:

Preservative: 0.03% Proclin 300. Constituents: 50% Glycerol, 0.01M PBS, PH 7.4

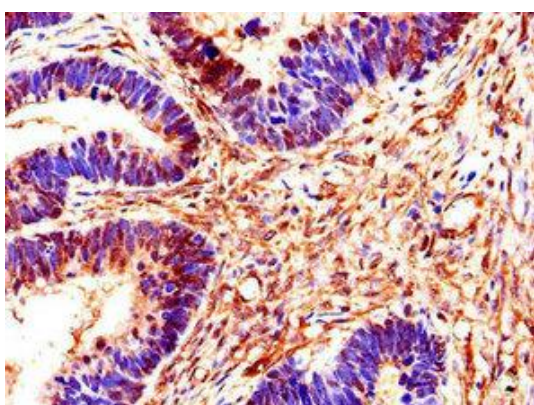
Product Images



Immunohistochemistry of paraffin-embedded human prostate cancer using PACO47678 at dilution of 1:100.



Immunofluorescent analysis of HeLa cells using PACO47678 at dilution of 1:100 and Alexa Fluor 488-conjugated AffiniPure Goat Anti-Rabbit IgG(H+L).



Immunohistochemistry of paraffin-embedded human ovarian cancer using PACO47678 at dilution of 1:100.