

SCO1 Antibody



PACO47634

Product Information

Size:

50ug

Reactivity:

Human

Source:

Rabbit

Isotype:

IgG

Applications:

ELISA, IHC

Recommended dilutions:

ELISA:1:2000-1:10000, IHC:1:20-1:200

Protein Background:

Thought to play a role in cellular copper homeostasis, mitochondrial redox signaling or insertion of copper into the active site of COX.

Gene ID:

SCO1

Uniprot

O75880

Synonyms:

Protein SCO1 homolog, mitochondrial, SCO1, SCOD1

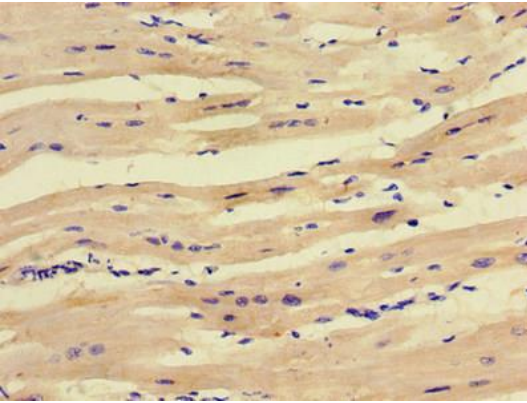
Immunogen:

Recombinant Human Protein SCO1 homolog, mitochondrial protein (29-176AA).

Storage:

Preservative: 0.03% Proclin 300. Constituents: 50% Glycerol, 0.01M PBS, PH 7.4

Product Images



Immunohistochemistry of paraffin-embedded human heart tissue using PACO47634 at dilution of 1:100.