

# MAPK10 Antibody



PACO47538

---

## Product Information

**Size:**

50ug

**Reactivity:**

Human

**Source:**

Rabbit

**Isotype:**

IgG

**Applications:**

ELISA, IHC, IF

**Recommended dilutions:**

ELISA:1:2000-1:10000, IHC:1:20-1:200,  
IF:1:50-1:200

**Protein Background:****Gene ID:**

MAPK10

**Uniprot**

P53779

**Synonyms:**

Mitogen-activated protein kinase 10 (MAP kinase 10) (MAPK 10) (EC 2.7.11.24) (MAP kinase p49 3F12) (Stress-activated protein kinase 1b) (SAPK1b) (Stress-activated protein kinase JNK3) (c-Jun N-terminal kinase 3), MAPK10, JNK3 JNK3A PRKM10 SAPK1B

**Immunogen:**

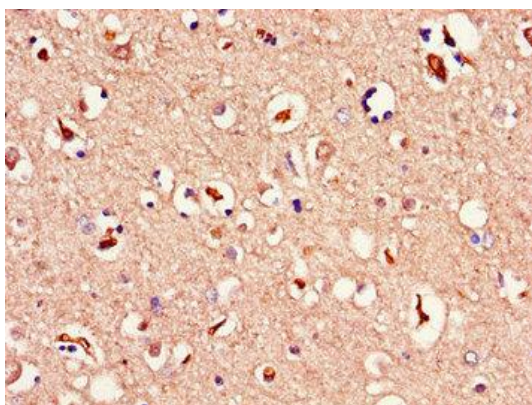
Recombinant Human Mitogen-activated protein kinase 10 protein (133-316AA).

**Storage:**

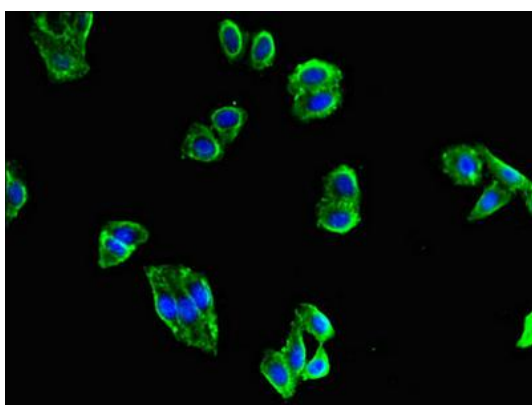
Preservative: 0.03% Proclin 300. Constituents: 50% Glycerol, 0.01M PBS, PH 7.4

## Product Images

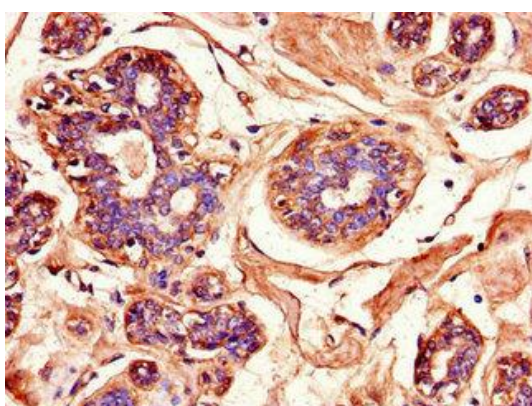
---



Immunohistochemistry of paraffin-embedded human brain tissue using PACO47538 at dilution of 1:100.



Immunofluorescent analysis of HepG2 cells using PACO47538 at dilution of 1:100 and Alexa Fluor 488-conjugated AffiniPure Goat Anti-Rabbit IgG(H+L).



Immunohistochemistry of paraffin-embedded human testis tissue using PACO47538 at dilution of 1:100.