

LCE1B Antibody



PACO47502

Product Information

Size:

50ug

Reactivity:

Human

Source:

Rabbit

Isotype:

IgG

Applications:

ELISA, IHC, IF

Recommended dilutions:

ELISA:1:2000-1:10000, IHC:1:20-1:200,
IF:1:50-1:200

Protein Background:

Precursors of the cornified envelope of the stratum corneum.

Gene ID:

LCE1B

Uniprot

Q5T7P3

Synonyms:

Late cornified envelope protein 1B (Late envelope protein 2) (Small proline-rich-like epidermal differentiation complex protein 2A), LCE1B, LEP2 SPRL2A

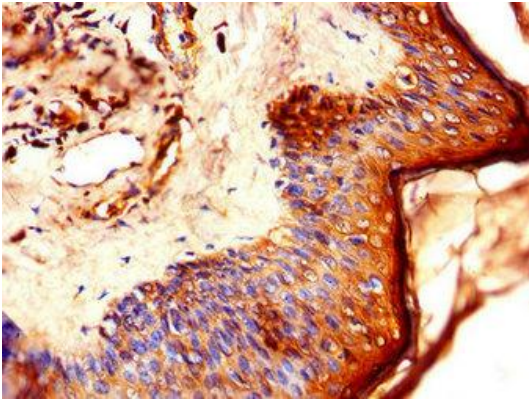
Immunogen:

Recombinant Human Late cornified envelope protein 1B protein (1-118AA).

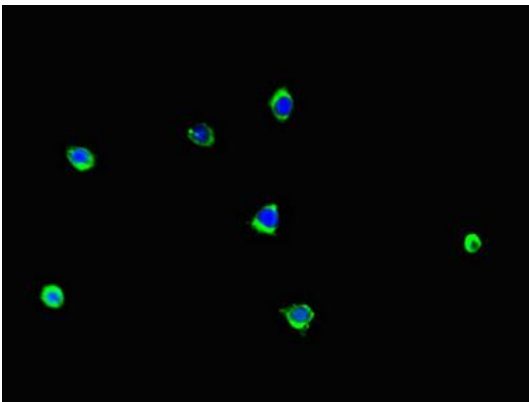
Storage:

Preservative: 0.03% Proclin 300. Constituents: 50% Glycerol, 0.01M PBS, PH 7.4

Product Images



Immunohistochemistry of paraffin-embedded human skin tissue using PACO47502 at dilution of 1:100.



Immunofluorescent analysis of A375 cells using PACO47502 at dilution of 1:100 and Alexa Fluor 488-conjugated AffiniPure Goat Anti-Rabbit IgG(H+L).