

# EFEMP2 Antibody



PACO47382

---

## Product Information

**Size:**

50ug

**Reactivity:**

Human, Mouse

**Source:**

Rabbit

**Isotype:**

IgG

**Applications:**

ELISA, WB, IHC

**Recommended dilutions:**

ELISA:1:2000-1:10000, WB:1:1000-1:5000,  
IHC:1:20-1:200

**Protein Background:**

basement membrane, extracellular exosome, extracellular region, extracellular vesicle, extracellular matrix structural constituent.

**Gene ID:**

EFEMP2

**Uniprot**

O95967

**Synonyms:**

EGF-containing fibulin-like extracellular matrix protein 2 (Fibulin-4) (FIBL-4) (Protein UPH1), EFEMP2, FBLN4

**Immunogen:**

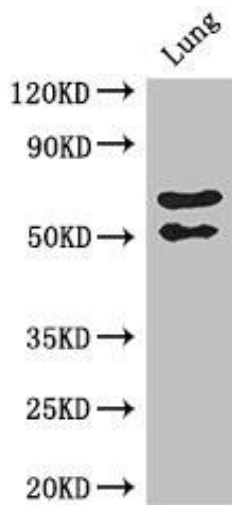
Recombinant Human EGF-containing fibulin-like extracellular matrix protein 2 protein (26-165AA).

**Storage:**

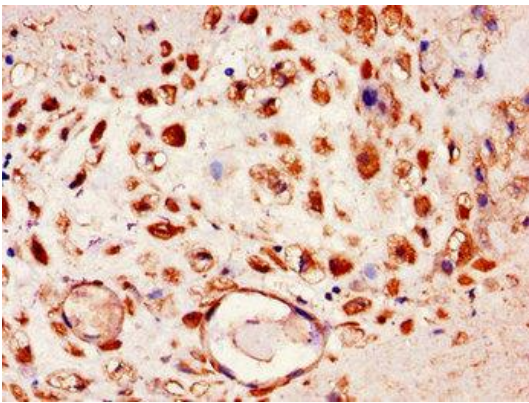
Preservative: 0.03% Proclin 300. Constituents: 50% Glycerol, 0.01M PBS, PH 7.4

## Product Images

---



Western Blot. Positive WB detected in: Mouse lung tissue. All lanes: EFEMP2 antibody at 2.7 $\mu$ g/ml. Secondary. Goat polyclonal to rabbit IgG at 1/50000 dilution. Predicted band size: 50 kDa. Observed band size: 50, 70 kDa.



Immunohistochemistry of paraffin-embedded human placenta tissue using PACO47382 at dilution of 1:100.