

ANP32D Antibody



PACO47302

Product Information

Size:

50ug

Reactivity:

Human

Source:

Rabbit

Isotype:

IgG

Applications:

ELISA, IHC, IF

Recommended dilutions:

ELISA:1:2000-1:10000, IHC:1:20-1:200,
IF:1:50-1:200

Protein Background:

Gene ID:

ANP32D

Uniprot

O95626

Synonyms:

acid, c leucine-rich nuclear phosphoprotein 32 family member D (Phosphoprotein 32-related protein 2) (Tumorigenic protein pp32r2), ANP32D, PP32R2

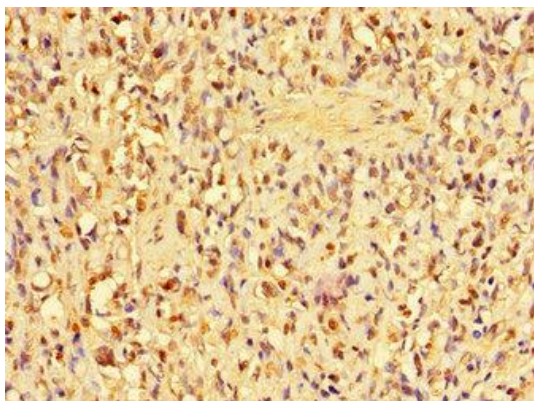
Immunogen:

Recombinant Human acid, c leucine-rich nuclear phosphoprotein 32 family member D protein (1-131AA).

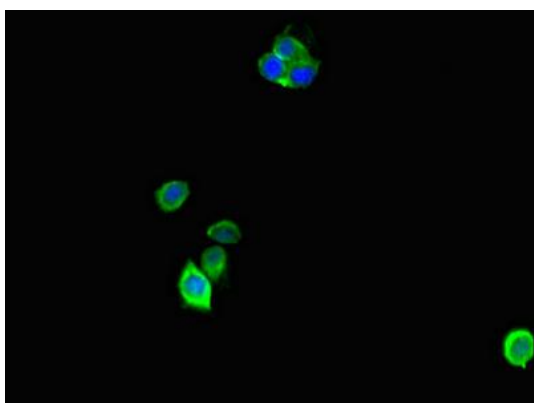
Storage:

Preservative: 0.03% Proclin 300. Constituents: 50% Glycerol, 0.01M PBS, PH 7.4

Product Images



Immunohistochemistry of paraffin-embedded human gastric cancer using PACO47302 at dilution of 1:100.



Immunofluorescent analysis of HeLa cells using PACO47302 at dilution of 1:100 and Alexa Fluor 488-conjugated AffiniPure Goat Anti-Rabbit IgG(H+L).