

ADAM12 Antibody



PACO47282

Product Information

Size:

50ug

Reactivity:

Human

Source:

Rabbit

Isotype:

IgG

Applications:

ELISA, IHC, IF

Recommended dilutions:

ELISA:1:2000-1:10000, IHC:1:20-1:200,
IF:1:50-1:200

Protein Background:

Involved in skeletal muscle regeneration, specifically at the onset of cell fusion. Also involved in macrophage-derived giant cells (MGC) and osteoclast formation from mononuclear precursors.

Gene ID:

ADAM12

Uniprot

O43184

Synonyms:

Disintegrin and metalloproteinase domain-containing protein 12 (ADAM 12) (EC 3.4.24) (Meltrin-alpha), ADAM12, MLTN

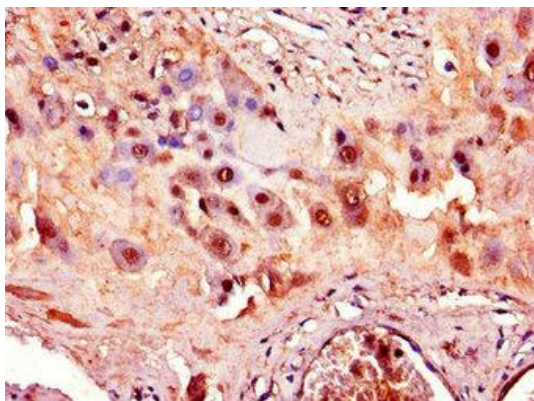
Immunogen:

Recombinant Human Disintegrin and metalloproteinase domain-containing protein 12 protein (730-909AA).

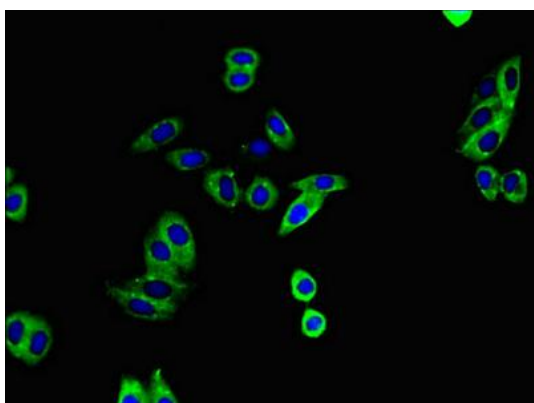
Storage:

Preservative: 0.03% Proclin 300. Constituents: 50% Glycerol, 0.01M PBS, PH 7.4

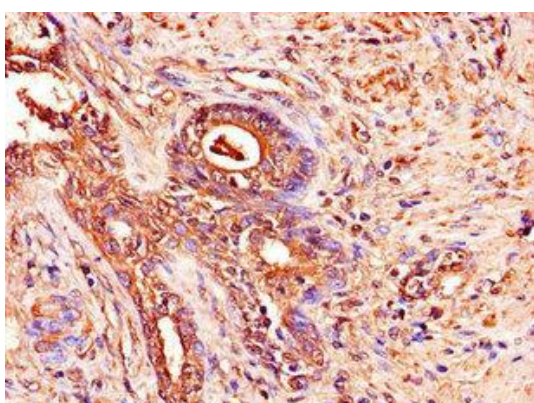
Product Images



Immunohistochemistry of paraffin-embedded human placenta tissue using PACO47282 at dilution of 1:100.



Immunofluorescent analysis of HepG2 cells using PACO47282 at dilution of 1:100 and Alexa Fluor 488-conjugated AffiniPure Goat Anti-Rabbit IgG(H+L).



Immunohistochemistry of paraffin-embedded human prostate cancer using PACO47282 at dilution of 1:100.