

LRCH1 Antibody



PACO47266

Product Information

Size:

50ug

Reactivity:

Human

Source:

Rabbit

Isotype:

IgG

Applications:

ELISA, WB, IHC, IF

Recommended dilutions:

ELISA:1:2000-1:10000, WB:1:1000-1:5000,
IHC:1:20-1:200, IF:1:50-1:200

Protein Background:

Gene ID:

LRCH1

Uniprot

Q9Y2L9

Synonyms:

Leucine-rich repeat and calponin homology domain-containing protein 1 (Calponin homology domain-containing protein 1) (Neuronal protein 81) (NP81), LRCH1, CHDC1 KIAA1016

Immunogen:

Recombinant Human Leucine-rich repeat and calponin homology domain-containing protein 1 protein (1-105AA).

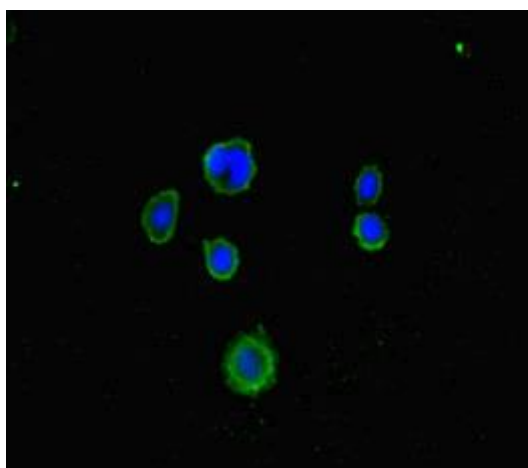
Storage:

Preservative: 0.03% Proclin 300. Constituents: 50% Glycerol, 0.01M PBS, PH 7.4

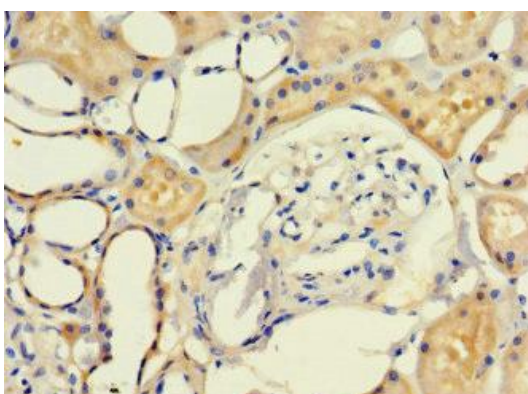
Product Images



Western blot. All lanes: LRCH1 antibody at 15 μ g/ml + Hela whole cell lysate. Secondary. Goat polyclonal to rabbit IgG at 1/10000 dilution. Predicted band size: 81, 78, 85 kDa. Observed band size: 81 kDa.



Immunofluorescent analysis of MCF-7 cells using PACO47266 at dilution of 1:100 and Alexa Fluor 488-conjugated AffiniPure Goat Anti-Rabbit IgG(H+L).



Immunohistochemistry of paraffin-embedded human kidney tissue using PACO47266 at dilution of 1:100.