

Product Information

Size:

50ug

Reactivity:

Human

Source:

Rabbit

Isotype:

IgG

Applications:

ELISA, IHC

Recommended dilutions:

ELISA:1:2000-1:10000, IHC:1:20-1:200

Protein Background:

Cleaves the 2'-5' phosphodiester linkage at the branch point of lariat intron pre-mRNAs after splicing and converts them into linear molecules that are subsequently degraded. It thereby facilitates ribonucleotide turnover. It may also participate in retrovirus replication via an RNA lariat intermediate in cDNA synthesis.

Gene ID:

DBR1

Uniprot

Q9UK59

Synonyms:

Lariat debranching enzyme (EC 3.1), DBR1

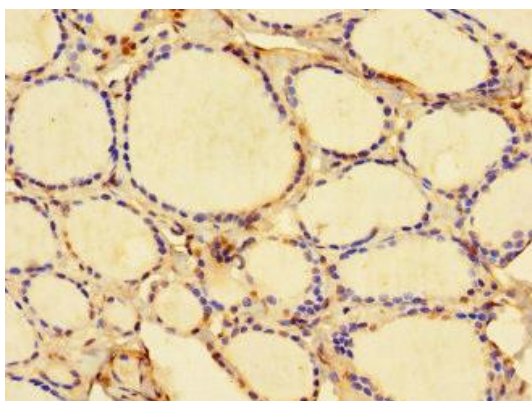
Immunogen:

Recombinant Human Lariat debranching enzyme protein (1-220AA).

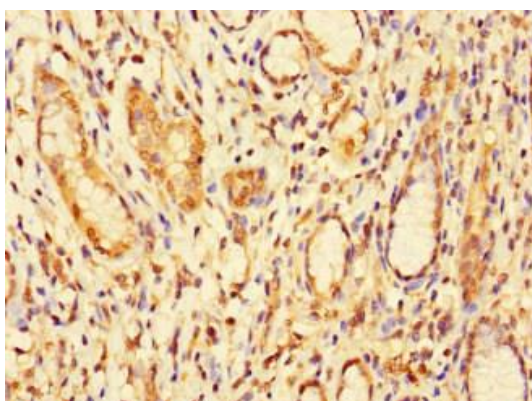
Storage:

Preservative: 0.03% Proclin 300. Constituents: 50% Glycerol, 0.01M PBS, PH 7.4

Product Images



Immunohistochemistry of paraffin-embedded human thyroid tissue using PACO47226 at dilution of 1:100.



Immunohistochemistry of paraffin-embedded human gastric cancer using PACO47226 at dilution of 1:100.