

# TBC1D24 Antibody



PACO47222

---

## Product Information

**Size:**

50ug

**Reactivity:**

Human

**Source:**

Rabbit

**Isotype:**

IgG

**Applications:**

ELISA, IHC, IF

**Recommended dilutions:**

ELISA:1:2000-1:10000, IHC:1:20-1:200,  
IF:1:50-1:200

**Protein Background:**

May act as a GTPase-activating protein for Rab family protein(s). Involved in neuronal projections development, probably through a negative modulation of ARF6 function.

**Gene ID:**

TBC1D24

**Uniprot**

Q9ULP9

**Synonyms:**

TBC1 domain family member 24, TBC1D24, KIAA1171

**Immunogen:**

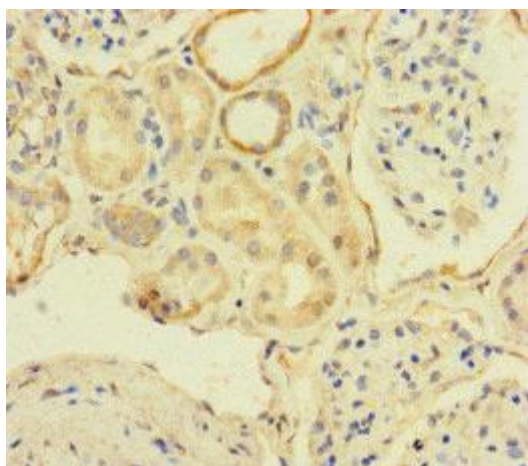
Recombinant Human TBC1 domain family member 24 protein (1-169AA).

**Storage:**

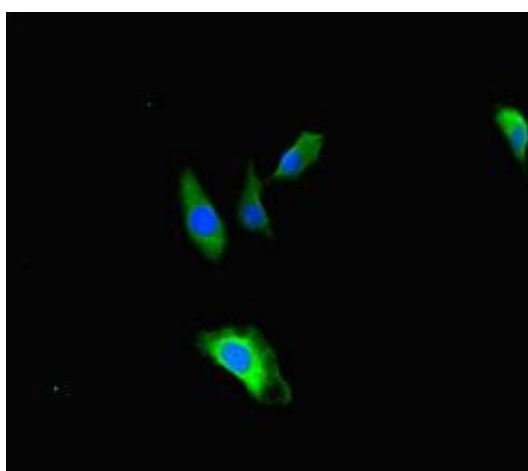
Preservative: 0.03% Proclin 300. Constituents: 50% Glycerol, 0.01M PBS, PH 7.4

## Product Images

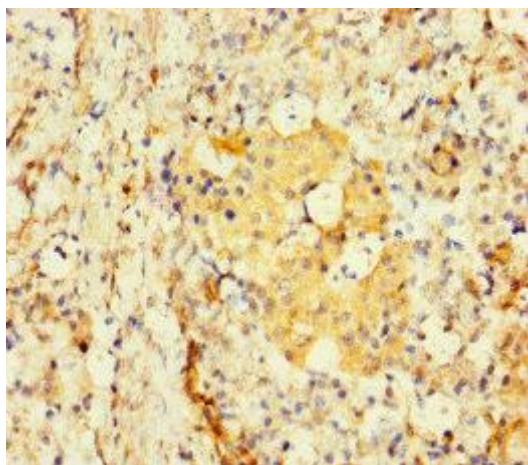
---



Immunohistochemistry of paraffin-embedded human kidney tissue using PACO47222 at dilution of 1:100.



Immunofluorescent analysis of HeLa cells using PACO47222 at dilution of 1:100 and Alexa Fluor 488-conjugated AffiniPure Goat Anti-Rabbit IgG(H+L).



Immunohistochemistry of paraffin-embedded human pancreatic tissue using PACO47222 at dilution of 1:100.