

SMOC1 Antibody



PACO47102

Product Information

Size:

50ug

Reactivity:

Human, Mouse

Source:

Rabbit

Isotype:

IgG

Applications:

ELISA, WB, IHC, IF

Recommended dilutions:

ELISA:1:2000-1:10000, WB:1:1000-1:5000,
IHC:1:20-1:200, IF:1:50-1:200

Protein Background:

Plays essential roles in both eye and limb development. Probable regulator of osteoblast differentiation.

Gene ID:

SMOC1

Uniprot

Q9H4F8

Synonyms:

SPARC-related modular calcium-binding protein 1 (Secreted modular calcium-binding protein 1) (SMOC-1), SMOC1

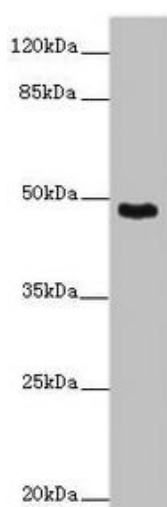
Immunogen:

Recombinant Human SPARC-related modular calcium-binding protein 1 protein (277-382AA).

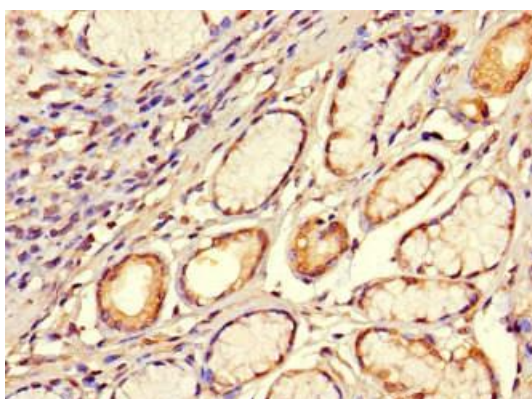
Storage:

Preservative: 0.03% Proclin 300. Constituents: 50% Glycerol, 0.01M PBS, PH 7.4

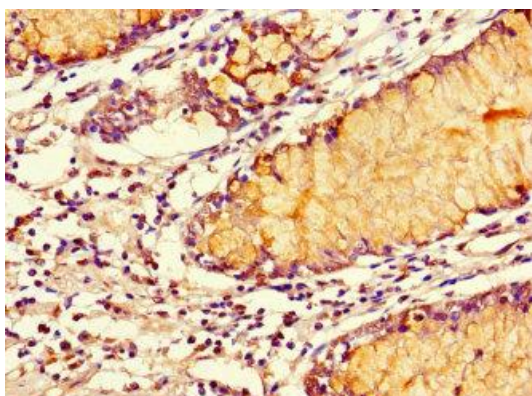
Product Images



Western blot. All lanes: SMOC1 antibody at 14 μ g/ml + Mouse skeletal muscle tissue. Secondary. Goat polyclonal to rabbit IgG at 1/10000 dilution. Predicted band size: 48 kDa. Observed band size: 48 kDa.



Immunohistochemistry of paraffin-embedded human gastric cancer using PACO47102 at dilution of 1:100.



Immunohistochemistry of paraffin-embedded human colon cancer using PACO47102 at dilution of 1:100.