

## Product Information

**Size:**

50ug

**Reactivity:**

Human

**Source:**

Rabbit

**Isotype:**

IgG

**Applications:**

ELISA, IHC, IF

**Recommended dilutions:**

ELISA:1:2000-1:10000, IHC:1:20-1:200,  
IF:1:50-1:200

**Protein Background:**

Component of the TSC-TBC complex, that contains TBC1D7 in addition to the TSC1-TSC2 complex and consists of the functional complex possessing GTPase-activating protein (GAP) activity toward RHEB in response to alterations in specific cellular growth conditions. The small GTPase RHEB is a direct activator of the protein kinase activity of mTORC1 and the TSC-TBC complex acts as a negative regulator of mTORC1 signaling cascade by acting as a GAP for RHEB. Participates in the proper sensing of growth factors and glucose, but not amino acid, by mTORC1. It is unclear whether TBC1D7 acts as a GTPase-activating protein and additional studies are required to answer this question.

**Gene ID:**

TBC1D7

**Uniprot**

Q9P0N9

**Synonyms:**

TBC1 domain family member 7 (Cell migration-inducing protein 23), TBC1D7, TBC7

**Immunogen:**

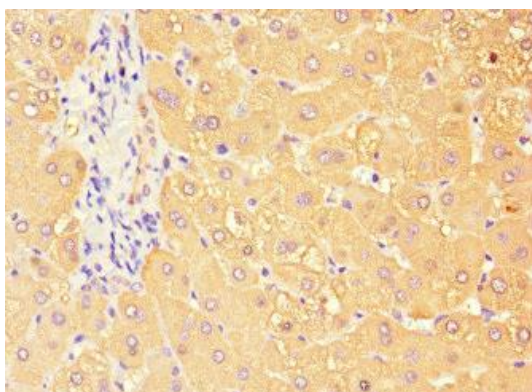
Recombinant Human TBC1 domain family member 7 protein (1-293AA).

**Storage:**

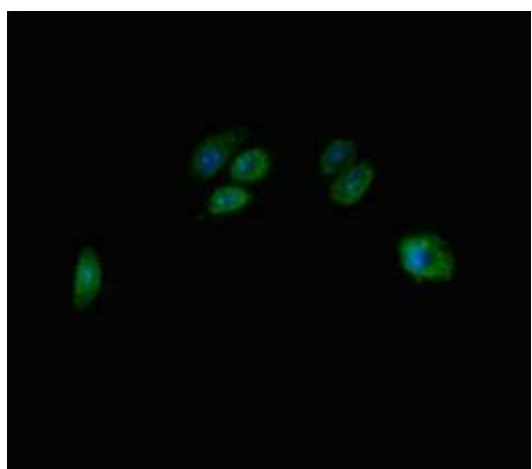
Preservative: 0.03% Proclin 300. Constituents: 50% Glycerol, 0.01M PBS, PH 7.4

## Product Images

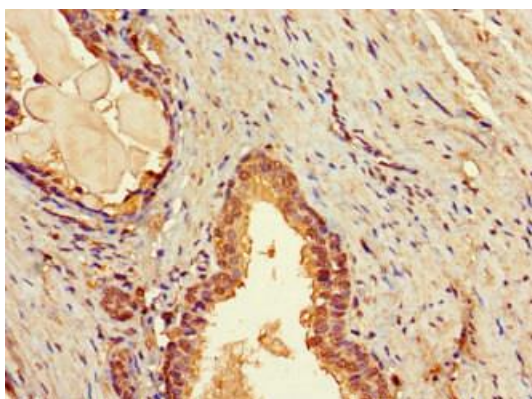
---



Immunohistochemistry of paraffin-embedded human liver tissue using PACO47090 at dilution of 1:100.



Immunofluorescent analysis of HepG2 cells using PACO47090 at dilution of 1:100 and Alexa Fluor 488-conjugated AffiniPure Goat Anti-Rabbit IgG(H+L).



Immunohistochemistry of paraffin-embedded human prostate tissue using PACO47090 at dilution of 1:100.