

## Product Information

**Size:**

50ug

**Reactivity:**

Human, Mouse

**Source:**

Rabbit

**Isotype:**

IgG

**Applications:**

ELISA, WB, IHC

**Recommended dilutions:**

ELISA:1:2000-1:10000, WB:1:2000-1:10000,  
IHC:1:20-1:200

**Protein Background:**

Exonuclease required for double-strand breaks resection and efficient homologous recombination. Plays a key role in controlling the initial steps of chromosomal break repair, it is recruited to chromatin in a damage-dependent manner and functionally interacts with the MRN complex to accelerate resection through its 3'-5' exonuclease activity, which efficiently processes double-stranded DNA substrates containing nicks.

**Gene ID:**

EXD2

**Uniprot**

Q9NVH0

**Synonyms:**

Exonuclease 3'-5' domain-containing protein 2 (EC 3.1.11.1) (Exonuclease 3'-5' domain-like-containing protein 2), EXD2, C14orf114 EXDL2

**Immunogen:**

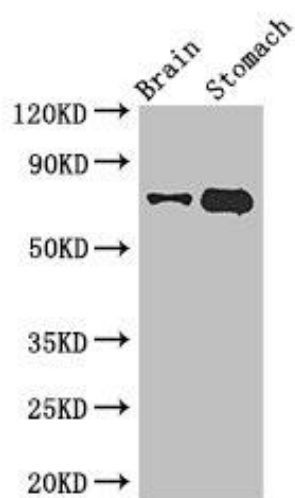
Recombinant Human Exonuclease 3'-5' domain-containing protein 2 protein (137-245AA).

**Storage:**

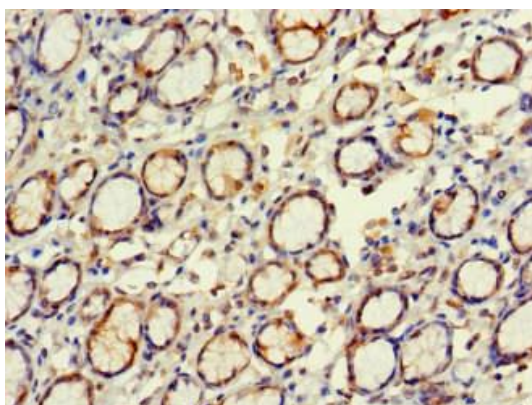
Preservative: 0.03% Proclin 300. Constituents: 50% Glycerol, 0.01M PBS, PH 7.4

## Product Images

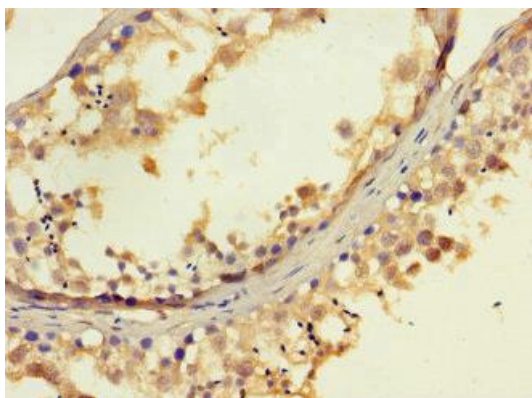
---



Western Blot. Positive WB detected in: Mouse brain tissue, Mouse stomach tissue. All lanes: EXD2 antibody at 2.8 $\mu$ g/ml. Secondary. Goat polyclonal to rabbit IgG at 1/50000 dilution. Predicted band size: 71, 57 kDa. Observed band size: 71 kDa.



Immunohistochemistry of paraffin-embedded human gastric cancer using PACO47082 at dilution of 1:100.



Immunohistochemistry of paraffin-embedded human testis tissue using PACO47082 at dilution of 1:100.