

IFT46 Antibody



PACO47074

Product Information

Size:

50ug

Reactivity:

Human, Mouse

Source:

Rabbit

Isotype:

IgG

Applications:

ELISA, WB, IHC

Recommended dilutions:

ELISA:1:2000-1:10000, WB:1:1000-1:5000,
IHC:1:20-1:200

Protein Background:

Forms part of a complex involved in intraflagellar transport (IFT), the bi-directional movement of particles required for the assembly, maintenance and functioning of primary cilia. May play a role in chondrocyte maturation and skeletogenesis.

Gene ID:

IFT46

Uniprot

Q9NQC8

Synonyms:

Intraflagellar transport protein 46 homolog, IFT46, C11orf2 C11orf60

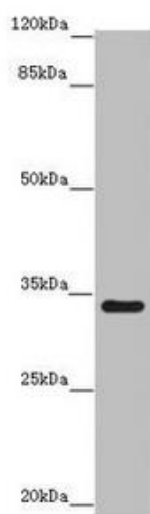
Immunogen:

Recombinant Human Intraflagellar transport protein 46 homolog protein (1-304AA).

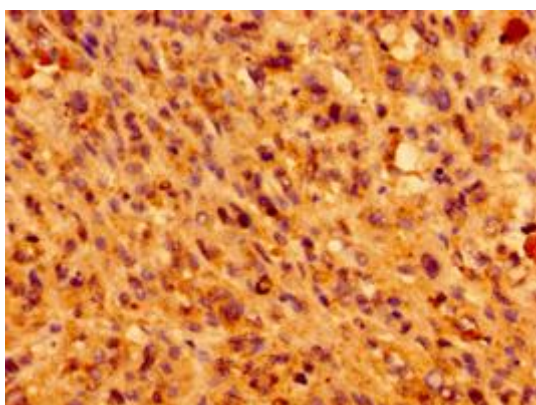
Storage:

Preservative: 0.03% Proclin 300. Constituents: 50% Glycerol, 0.01M PBS, PH 7.4

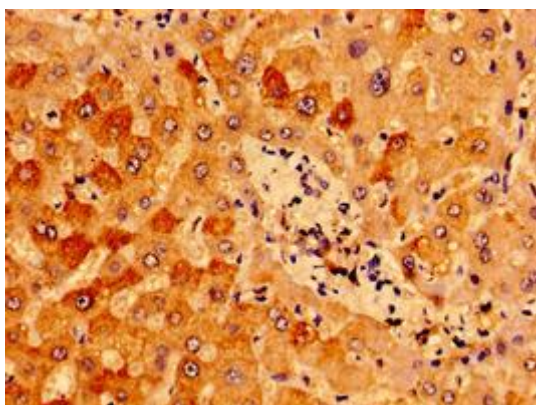
Product Images



Western blot. All lanes: IFT46 antibody at 8 $\mu\text{g/ml}$ + Mouse skeletal muscle tissue. Secondary. Goat polyclonal to rabbit IgG at 1/10000 dilution. Predicted band size: 35, 41 kDa. Observed band size: 35 kDa.



Immunohistochemistry of paraffin-embedded human melanoma using PACO47074 at dilution of 1:100.



Immunohistochemistry of paraffin-embedded human liver tissue using PACO47074 at dilution of 1:100.