

# SPATA16 Antibody



PACO47066

---

## Product Information

**Size:**

50ug

**Reactivity:**

Human

**Source:**

Rabbit

**Isotype:**

IgG

**Applications:**

ELISA, IHC

**Recommended dilutions:**

ELISA:1:2000-1:10000, IHC:1:20-1:200

**Protein Background:**

Involved in the formation of sperm acrosome, which implicated its potential role in spermatogenesis and sperm-egg fusion.

**Gene ID:**

SPATA16

**Uniprot**

Q9BXB7

**Synonyms:**

Spermatogenesis-associated protein 16 (Testis development protein NYD-SP12), SPATA16

**Immunogen:**

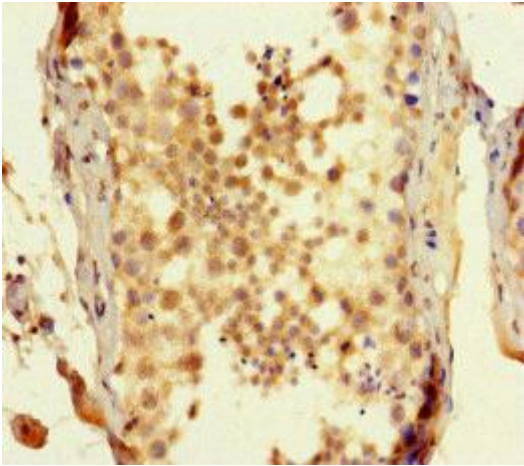
Recombinant Human Spermatogenesis-associated protein 16 protein (238-475AA).

**Storage:**

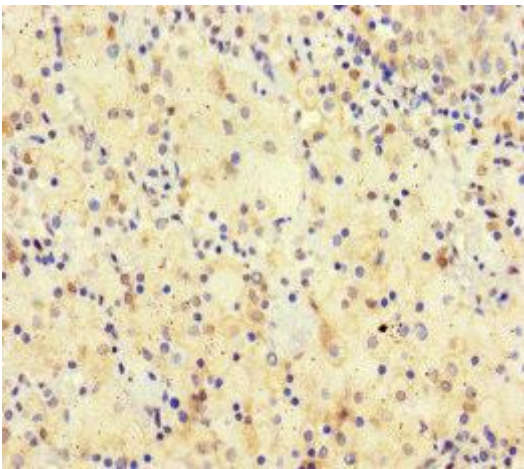
Preservative: 0.03% Proclin 300. Constituents: 50% Glycerol, 0.01M PBS, PH 7.4

## Product Images

---



Immunohistochemistry of paraffin-embedded human testis tissue using PACO47066 at dilution of 1:100.



Immunohistochemistry of paraffin-embedded human lung cancer using PACO47066 at dilution of 1:100.