

# SCPEP1 Antibody



PACO47062

---

## Product Information

**Size:**

50ug

**Reactivity:**

Human, Mouse

**Source:**

Rabbit

**Isotype:**

IgG

**Applications:**

ELISA, WB, IHC

**Recommended dilutions:**

ELISA:1:2000-1:10000, WB:1:1000-1:5000,  
IHC:1:20-1:200

**Protein Background:**

May be involved in vascular wall and kidney homeostasis.

**Gene ID:**

SCPEP1

**Uniprot**

Q9HB40

**Synonyms:**

Retinoid-inducible serine carboxypeptidase (EC 3.4.16) (Serine carboxypeptidase 1),  
SCPEP1, RISC SCP1

**Immunogen:**

Recombinant Human Retinoid-inducible serine carboxypeptidase protein (201-452AA).

**Storage:**

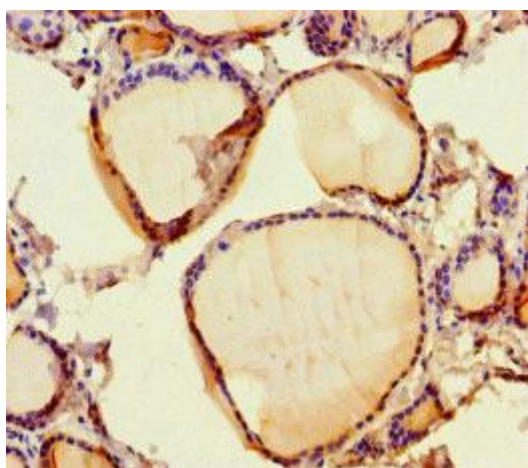
Preservative: 0.03% Proclin 300. Constituents: 50% Glycerol, 0.01M PBS, PH 7.4

## Product Images

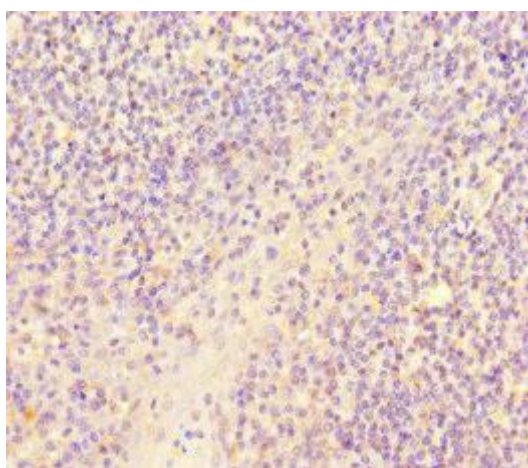
---



Western blot. All lanes: SCPEP1 antibody at 9  $\mu\text{g/ml}$  + Mouse stomach tissue. Secondary. Goat polyclonal to rabbit IgG at 1/10000 dilution. Predicted band size: 51, 33 kDa. Observed band size: 51 kDa.



Immunohistochemistry of paraffin-embedded human thyroid tissue using PACO47062 at dilution of 1:100.



Immunohistochemistry of paraffin-embedded human tonsil tissue using PACO47062 at dilution of 1:100.