

Product Information

Size:

50ug

Reactivity:

Human

Source:

Rabbit

Isotype:

IgG

Applications:

ELISA, IHC

Recommended dilutions:

ELISA:1:2000-1:10000, IHC:1:20-1:200

Protein Background:

DNA-dependent ATPase and 5'-3' DNA helicase required for the maintenance of both mitochondrial and nuclear genome stability. Efficiently unwinds G-quadruplex (G4) DNA structures and forked RNA-DNA hybrids. Resolves G4 structures, preventing replication pausing and double-strand breaks (DSBs) at G4 motifs. Involved in the maintenance of telomeric DNA. Inhibits telomere elongation, de novo telomere formation and telomere addition to DSBs via catalytic inhibition of telomerase. Reduces the processivity of telomerase by displacing active telomerase from DNA ends. Releases telomerase by unwinding the short telomerase RNA/telomeric DNA hybrid that is the intermediate in the telomerase reaction. Possesses an intrinsic strand annealing activity.

Gene ID:

PIF1

Uniprot

Q9H611

Synonyms:

ATP-dependent DNA helicase PIF1 (EC 3.6.4.12) (DNA repair and recombination helicase PIF1) (PIF1/RRM3 DNA helicase-like protein), PIF1, C15orf20

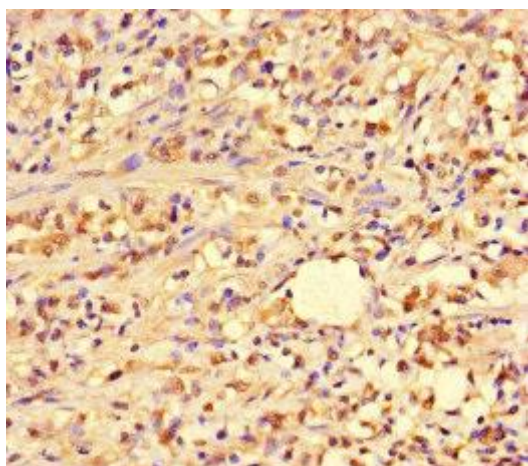
Immunogen:

Recombinant Human ATP-dependent DNA helicase PIF1 protein (125-360AA).

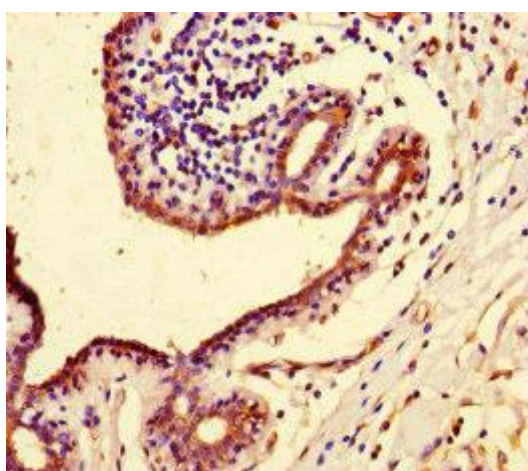
Storage:

Preservative: 0.03% Proclin 300. Constituents: 50% Glycerol, 0.01M PBS, PH 7.4

Product Images



Immunohistochemistry of paraffin-embedded human gastric cancer using PACO47030 at dilution of 1:100.



Immunohistochemistry of paraffin-embedded human breast cancer using PACO47030 at dilution of 1:100.