

# TMC2 Antibody



PACO46998

---

## Product Information

**Size:**

50ug

**Reactivity:**

Human

**Source:**

Rabbit

**Isotype:**

IgG

**Applications:**

ELISA, IF

**Recommended dilutions:**

ELISA:1:2000-1:10000, IF:1:50-1:200

**Protein Background:**

Probable ion channel required for the normal function of cochlear hair cells.

**Gene ID:**

TMC2

**Uniprot**

Q8TDI7

**Synonyms:**

Transmembrane channel-like protein 2 (Transmembrane cochlear-expressed protein 2), TMC2, C20orf145

**Immunogen:**

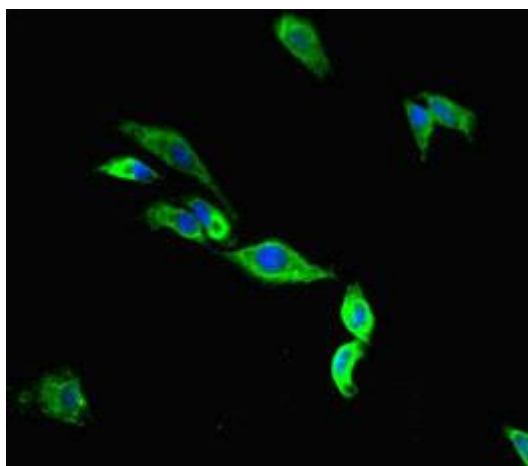
Recombinant Human Transmembrane channel-like protein 2 protein (6-206AA).

**Storage:**

Preservative: 0.03% Proclin 300. Constituents: 50% Glycerol, 0.01M PBS, PH 7.4

## Product Images

---



Immunofluorescent analysis of HeLa cells using PACO46998 at dilution of 1:100 and Alexa Fluor 488-conjugated AffiniPure Goat Anti-Rabbit IgG(H+L).