

WDR60 Antibody



PACO46926

Product Information

Size:

50ug

Reactivity:

Human

Source:

Rabbit

Isotype:

IgG

Applications:

ELISA, IHC, IF

Recommended dilutions:

ELISA:1:2000-1:10000, IHC:1:20-1:200,
IF:1:50-1:200

Protein Background:

May play a role in ciliogenesis.

Gene ID:

WDR60

Uniprot

Q8WVS4

Synonyms:

WD repeat-containing protein 60, WDR60

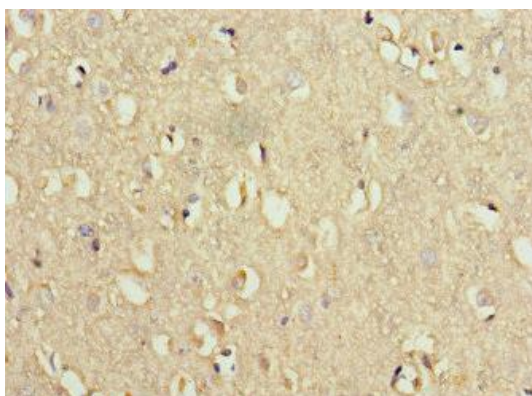
Immunogen:

Recombinant Human WD repeat-containing protein 60 protein (1-200AA).

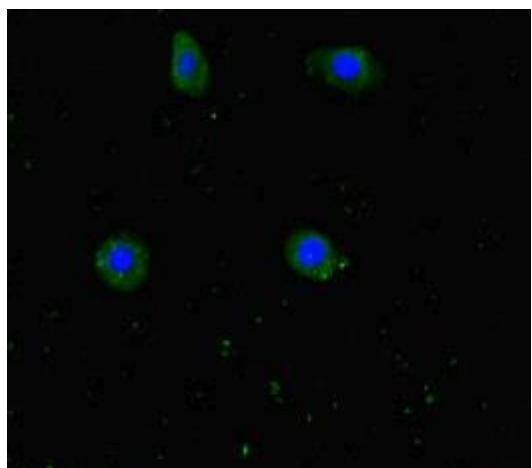
Storage:

Preservative: 0.03% Proclin 300. Constituents: 50% Glycerol, 0.01M PBS, PH 7.4

Product Images



Immunohistochemistry of paraffin-embedded human brain tissue using PACO46926 at dilution of 1:100.



Immunofluorescent analysis of HepG2 cells using PACO46926 at dilution of 1:100 and Alexa Fluor 488-conjugated AffiniPure Goat Anti-Rabbit IgG(H+L).