

PACO46922

---

## Product Information

**Size:**

50ug

**Reactivity:**

Human

**Source:**

Rabbit

**Isotype:**

IgG

**Applications:**

ELISA, IHC, IF

**Recommended dilutions:**

ELISA:1:2000-1:10000, IHC:1:20-1:200,  
IF:1:50-1:200

**Protein Background:**

Controls cell shape changes in the neuroepithelium during neural tube closure. Induces apical constriction in epithelial cells by promoting the apical accumulation of F-actin and myosin II, and probably by bundling stress fibers. Induces apicobasal cell elongation by redistributing gamma-tubulin and directing the assembly of robust apicobasal microtubule arrays.

**Gene ID:**

SHROOM3

**Uniprot**

Q8TF72

**Synonyms:**

Protein Shroom3 (Shroom-related protein) (hShrmL), SHROOM3, KIAA1481 SHRML

**Immunogen:**

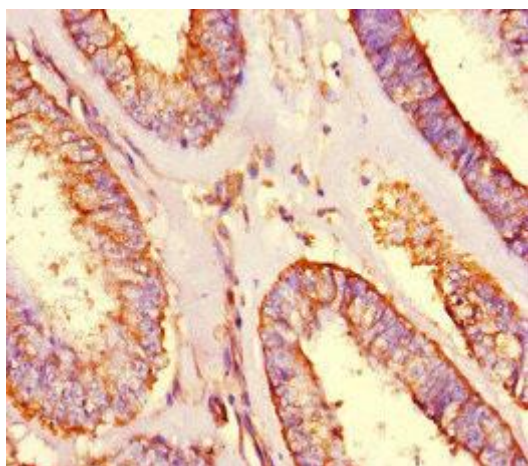
Recombinant Human Protein Shroom3 protein (1309-1571AA).

**Storage:**

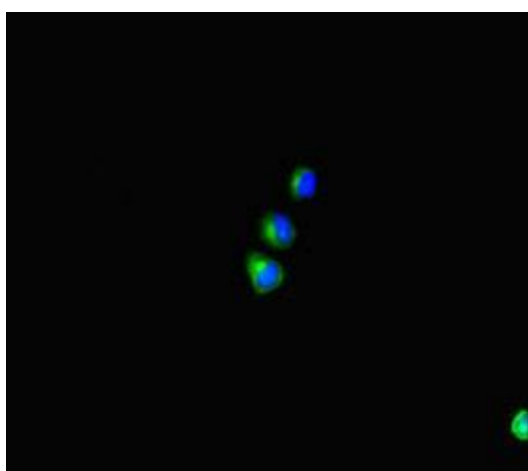
Preservative: 0.03% Proclin 300. Constituents: 50% Glycerol, 0.01M PBS, PH 7.4

## Product Images

---



Immunohistochemistry of paraffin-embedded human endometrial cancer using PACO46922 at dilution of 1:100.



Immunofluorescent analysis of HepG2 cells using PACO46922 at dilution of 1:100 and Alexa Fluor 488-conjugated AffiniPure Goat Anti-Rabbit IgG(H+L).