

EXPH5 Antibody



PACO46918

Product Information

Size:

50ug

Reactivity:

Human

Source:

Rabbit

Isotype:

IgG

Applications:

ELISA, IHC

Recommended dilutions:

ELISA:1:2000-1:10000, IHC:1:20-1:200

Protein Background:

May act as Rab effector protein and play a role in vesicle trafficking.

Gene ID:

EXPH5

Uniprot

Q8NEV8

Synonyms:

Exophilin-5 (Synaptotagmin-like protein homolog lacking C2 domains b) (Slac2-b) (Slp homolog lacking C2 domains b), EXPH5, KIAA0624 SLAC2B

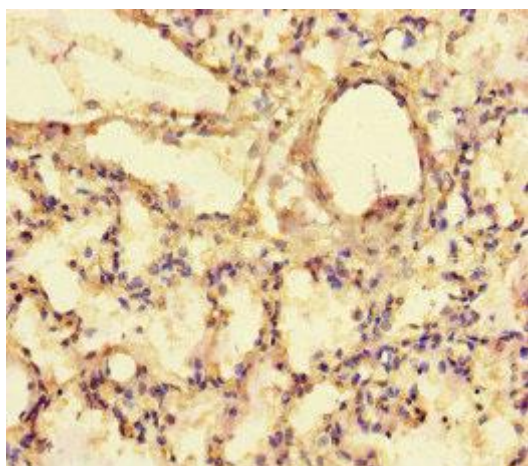
Immunogen:

Recombinant Human Exophilin-5 protein (1235-1490AA).

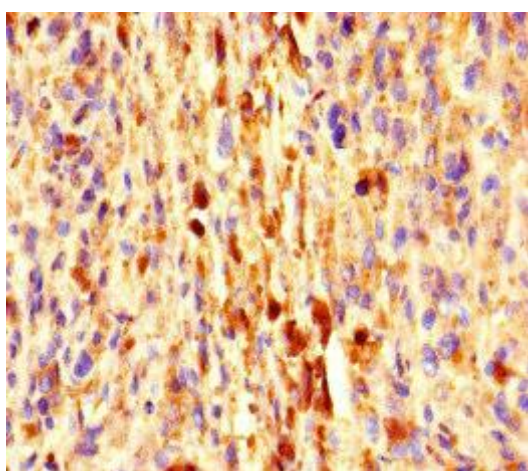
Storage:

Preservative: 0.03% Proclin 300. Constituents: 50% Glycerol, 0.01M PBS, PH 7.4

Product Images



Immunohistochemistry of paraffin-embedded human lung tissue using PACO46918 at dilution of 1:100.



Immunohistochemistry of paraffin-embedded human melanoma using PACO46918 at dilution of 1:100.