

C6orf223 Antibody



PACO46874

Product Information

Size:

50ug

Reactivity:

Human

Source:

Rabbit

Isotype:

IgG

Applications:

ELISA, IHC, IF

Recommended dilutions:

ELISA:1:2000-1:10000, IHC:1:20-1:200,
IF:1:50-1:200

Protein Background:**Gene ID:**

C6orf223

Uniprot

Q8N319

Synonyms:

Uncharacterized protein C6orf223, C6orf223

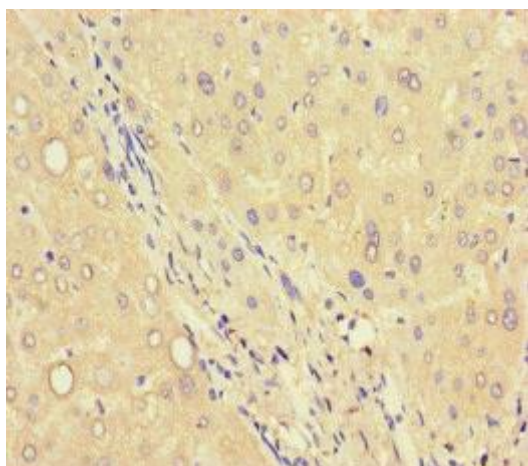
Immunogen:

Recombinant Human Uncharacterized protein C6orf223 protein (9-89AA).

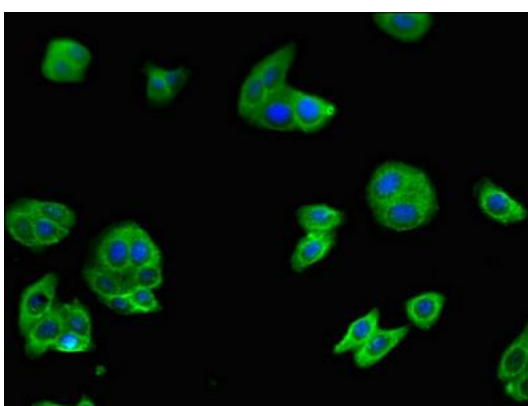
Storage:

Preservative: 0.03% Proclin 300. Constituents: 50% Glycerol, 0.01M PBS, PH 7.4

Product Images



Immunohistochemistry of paraffin-embedded human liver tissue using PACO46874 at dilution of 1:100.



Immunofluorescent analysis of HepG2 cells using PACO46874 at dilution of 1:100 and Alexa Fluor 488-conjugated AffiniPure Goat Anti-Rabbit IgG(H+L).