

PACO46826

---

## Product Information

**Size:**

50ug

**Reactivity:**

Human

**Source:**

Rabbit

**Isotype:**

IgG

**Applications:**

ELISA, IHC, IF

**Recommended dilutions:**

ELISA:1:2000-1:10000, IHC:1:20-1:200,  
IF:1:50-1:200

**Protein Background:**

May play an important role in the heart development by scaffolding PKC to the Z-disk region. May play a role in the regulation of cardiomyocyte expansion. Overexpression promotes the development of heart hypertrophy. Contributes to the regulation of dendritic spine morphogenesis in neurons. May restrain postsynaptic growth of excitatory synapses.

**Gene ID:**

PDLIM5

**Uniprot**

Q96HC4

**Synonyms:**

PDZ and LIM domain protein 5 (Enigma homolog) (Enigma-like PDZ and LIM domains protein), PDLIM5, ENH

**Immunogen:**

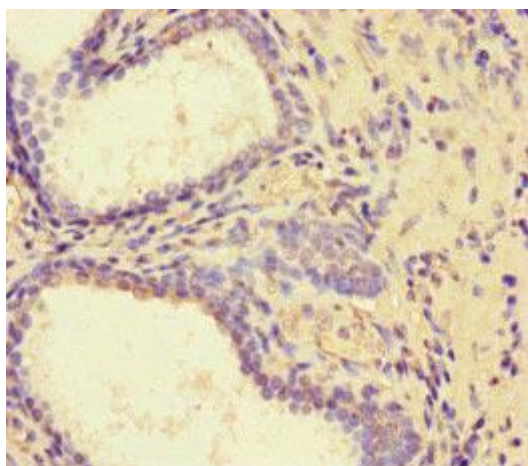
Recombinant Human PDZ and LIM domain protein 5 protein (268-404AA).

**Storage:**

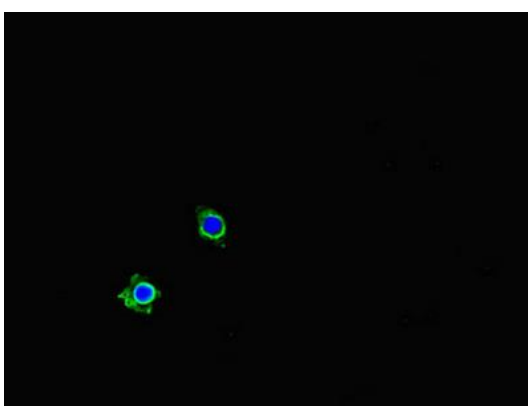
Preservative: 0.03% Proclin 300. Constituents: 50% Glycerol, 0.01M PBS, PH 7.4

## Product Images

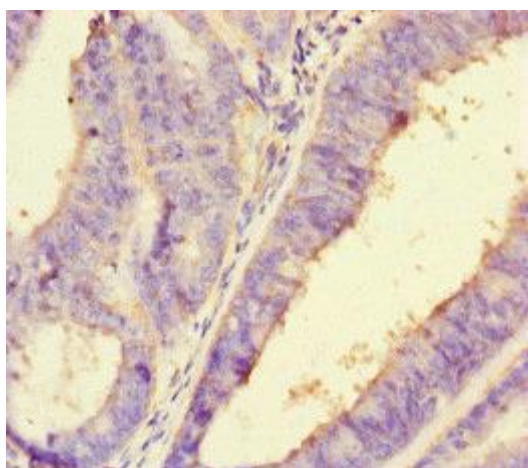
---



Immunohistochemistry of paraffin-embedded human prostate cancer using PACO46826 at dilution of 1:100.



Immunofluorescent analysis of HeLa cells using PACO46826 at dilution of 1:100 and Alexa Fluor 488-conjugated AffiniPure Goat Anti-Rabbit IgG(H+L).



Immunohistochemistry of paraffin-embedded human endometrial cancer using PACO46826 at dilution of 1:100.