

RTF1 Antibody



PACO46818

Product Information

Size:

50ug

Reactivity:

Human

Source:

Rabbit

Isotype:

IgG

Applications:

ELISA, WB, IHC, IF

Recommended dilutions:

ELISA:1:2000-1:10000, WB:1:2000-1:5000,
IHC:1:20-1:200, IF:1:50-1:200

Protein Background:**Gene ID:**

RTF1

Uniprot

Q92541

Synonyms:

RNA polymerase-associated protein RTF1 homolog, RTF1, KIAA0252

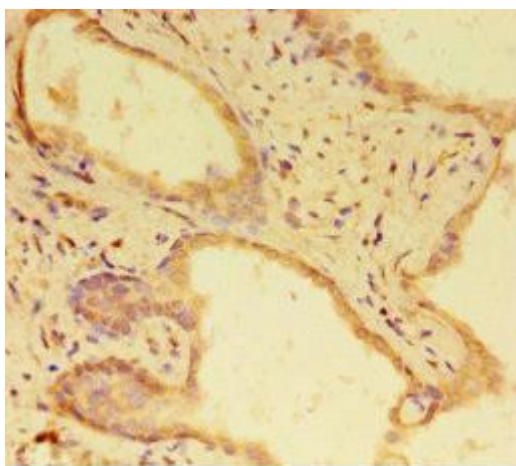
Immunogen:

Recombinant Human RNA polymerase-associated protein RTF1 homolog protein (620-670AA).

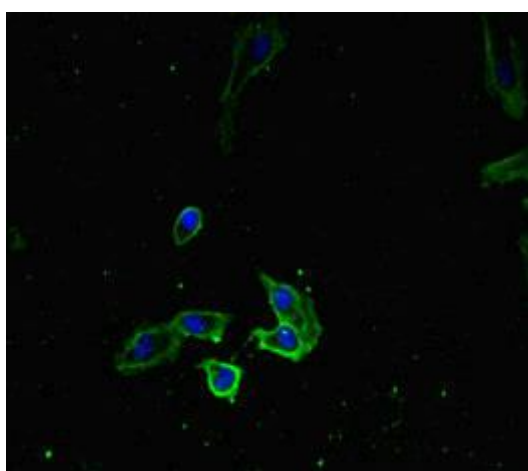
Storage:

Preservative: 0.03% Proclin 300. Constituents: 50% Glycerol, 0.01M PBS, PH 7.4

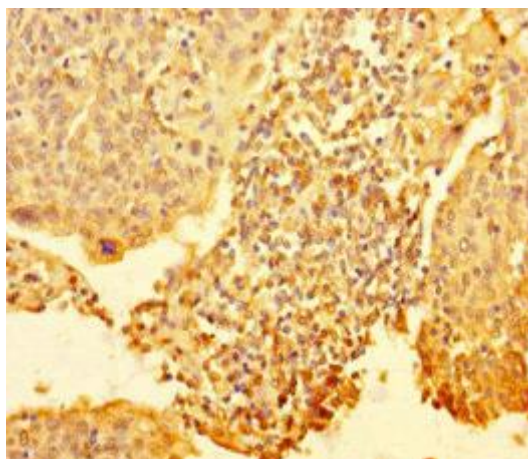
Product Images



Immunohistochemistry of paraffin-embedded human prostate cancer using PACO46818 at dilution of 1:100.



Immunofluorescent analysis of HeLa cells using PACO46818 at dilution of 1:100 and Alexa Fluor 488-conjugated AffiniPure Goat Anti-Rabbit IgG(H+L).



Immunohistochemistry of paraffin-embedded human cervical cancer using PACO46818 at dilution of 1:100.