

DMXL2 Antibody



PACO46806

Product Information

Size:

50ug

Reactivity:

Human

Source:

Rabbit

Isotype:

IgG

Applications:

ELISA, IHC, IF

Recommended dilutions:

ELISA:1:2000-1:10000, IHC:1:20-1:200,
IF:1:50-1:200

Protein Background:

May serve as a scaffold protein for MADD and RAB3GA on synaptic vesicles. Plays a role in the brain as a key controller of neuronal and endocrine homeostatic processes.

Gene ID:

DMXL2

Uniprot

Q8TDJ6

Synonyms:

DmX-like protein 2 (Rabconnectin-3), DMXL2, KIAA0856

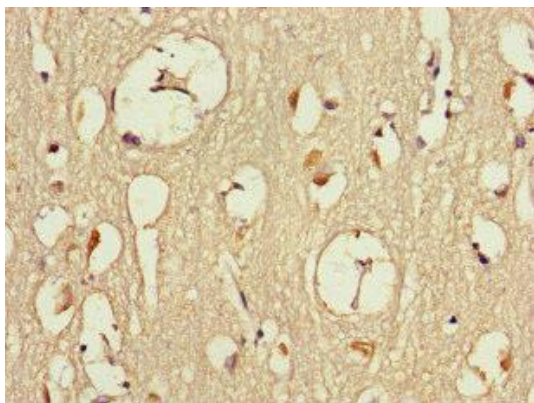
Immunogen:

Recombinant Human DmX-like protein 2 protein (2471-2657AA).

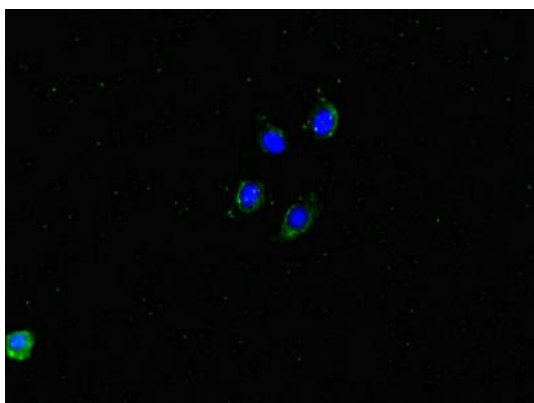
Storage:

Preservative: 0.03% Proclin 300. Constituents: 50% Glycerol, 0.01M PBS, PH 7.4

Product Images



Immunohistochemistry of paraffin-embedded human brain tissue using PACO46806 at dilution of 1:100.



Immunofluorescent analysis of HepG2 cells using PACO46806 at dilution of 1:100 and Alexa Fluor 488-conjugated AffiniPure Goat Anti-Rabbit IgG(H+L).