

PACO46798

Product Information

Size:

50ug

Reactivity:

Human

Source:

Rabbit

Isotype:

IgG

Applications:

ELISA, IF

Recommended dilutions:

ELISA:1:2000-1:10000, IF:1:50-1:200

Protein Background:

Voltage-independent, cation-nonselective channel which is permeable to sodium, potassium and calcium ions. Responsible for the background sodium ion leak current in neurons and controls neuronal excitability. Activated either by neuropeptides substance P or neurotensin. Required for normal respiratory rhythm and neonatal survival.

Gene ID:

NALCN

Uniprot

Q8IZF0

Synonyms:

Sodium leak channel non-selective protein (Canlon) (Voltage gated channel-like protein 1), NALCN, VGCNL1

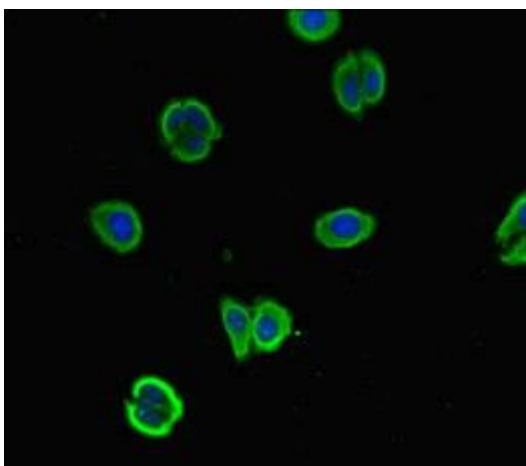
Immunogen:

Recombinant Human Sodium leak channel non-selective protein (19-141AA).

Storage:

Preservative: 0.03% Proclin 300. Constituents: 50% Glycerol, 0.01M PBS, PH 7.4

Product Images



Immunofluorescent analysis of HepG2 cells using PACO46798 at dilution of 1:100 and Alexa Fluor 488-conjugated AffiniPure Goat Anti-Rabbit IgG(H+L).