

PACO46786

Product Information

Size:

50ug

Reactivity:

Human

Source:

Rabbit

Isotype:

IgG

Applications:

ELISA, IHC, IF

Recommended dilutions:

ELISA:1:2000-1:10000, IHC:1:20-1:200,
IF:1:50-1:200

Protein Background:

Plays a role in the regulation of cell morphology and cytoskeletal organization. Required in the control of cell shape and migration. Required for developmental angiogenesis. In this process, required for microtubule reorganization and for efficient endothelial cell elongation. In quiescent endothelial cells, triggers rearrangement of the actin cytoskeleton, but does not alter microtubule alignment.

Gene ID:

FMNL3

Uniprot

Q8IVF7

Synonyms:

Formin-like protein 3 (Formin homology 2 domain-containing protein 3) (WW domain-binding protein 3) (WBP-3), FMNL3, FHOD3 FRL2 KIAA2014 WBP3

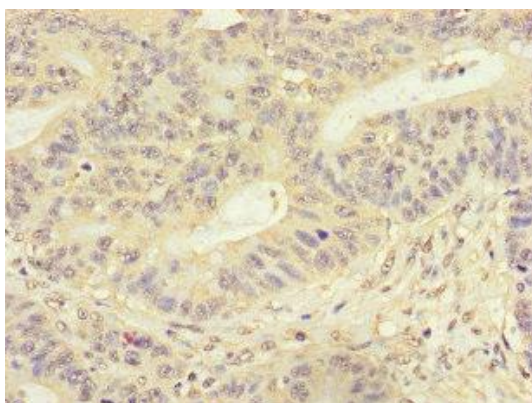
Immunogen:

Recombinant Human Formin-like protein 3 protein (2-212AA).

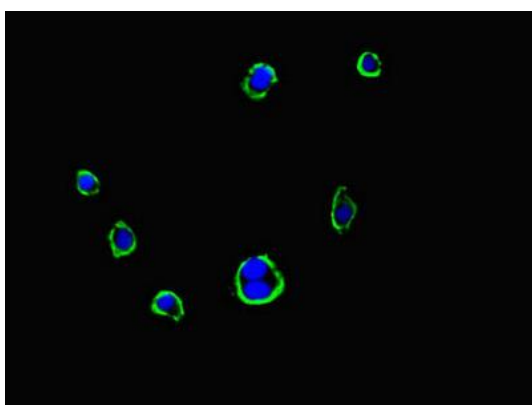
Storage:

Preservative: 0.03% Proclin 300. Constituents: 50% Glycerol, 0.01M PBS, PH 7.4

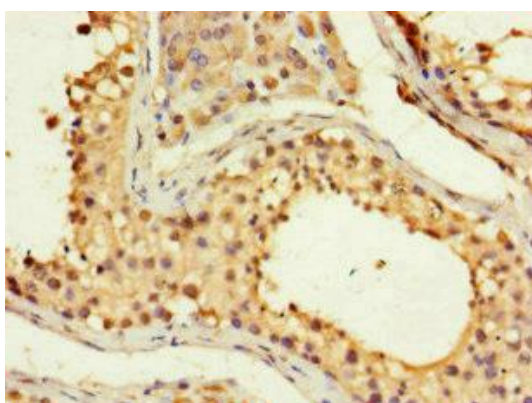
Product Images



Immunohistochemistry of paraffin-embedded human colon cancer using PACO46786 at dilution of 1:100.



Immunofluorescent analysis of HepG2 cells using PACO46786 at dilution of 1:100 and Alexa Fluor 488-conjugated AffiniPure Goat Anti-Rabbit IgG(H+L).



Immunohistochemistry of paraffin-embedded human testis tissue using PACO46786 at dilution of 1:100.