

# COMMD10 Antibody



PACO46770

---

## Product Information

**Size:**

50ug

**Reactivity:**

Human

**Source:**

Rabbit

**Isotype:**

IgG

**Applications:**

ELISA, IF

**Recommended dilutions:**

ELISA:1:2000-1:10000, IF:1:50-1:200

**Protein Background:**

May modulate activity of cullin-RING E3 ubiquitin ligase (CRL) complexes. May down-regulate activation of NF-kappa-B.

**Gene ID:**

COMMD10

**Uniprot**

Q9Y6G5

**Synonyms:**

COMM domain-containing protein 10, COMMD10

**Immunogen:**

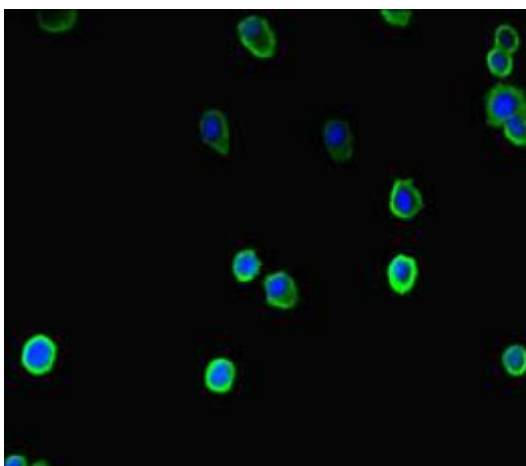
Recombinant Human COMM domain-containing protein 10 protein (84-172AA).

**Storage:**

Preservative: 0.03% Proclin 300. Constituents: 50% Glycerol, 0.01M PBS, PH 7.4

## Product Images

---



Immunofluorescent analysis of HepG2 cells using PACO46770 at dilution of 1:100 and Alexa Fluor 488-conjugated AffiniPure Goat Anti-Rabbit IgG(H+L).