

CKAP2L Antibody



PACO46766

Product Information

Size:

50ug

Reactivity:

Human

Source:

Rabbit

Isotype:

IgG

Applications:

ELISA, IHC, IF

Recommended dilutions:

ELISA:1:2000-1:10000, IHC:1:20-1:200,
IF:1:50-1:200

Protein Background:

Microtubule-associated protein required for mitotic spindle formation and cell-cycle progression in neural progenitor cells.

Gene ID:

CKAP2L

Uniprot

Q8IYA6

Synonyms:

Cytoskeleton-associated protein 2-like (Radial fiber and mitotic spindle protein) (Radmis), CKAP2L

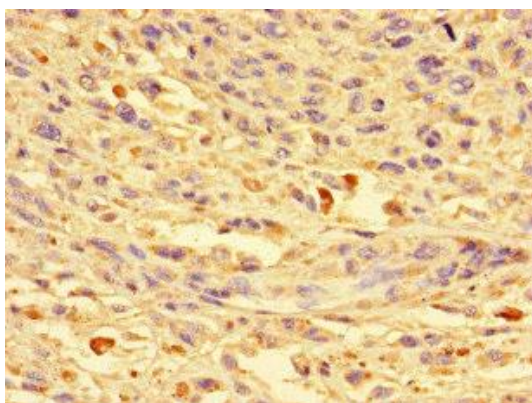
Immunogen:

Recombinant Human Cytoskeleton-associated protein 2-like protein (246-413AA).

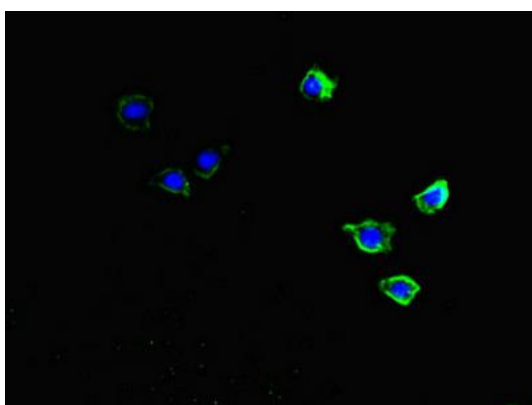
Storage:

Preservative: 0.03% Proclin 300. Constituents: 50% Glycerol, 0.01M PBS, PH 7.4

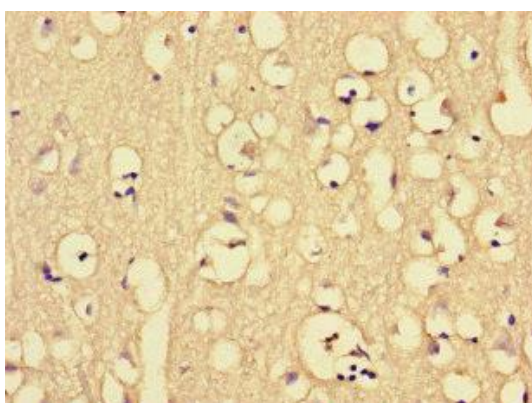
Product Images



Immunohistochemistry of paraffin-embedded human melanoma using PACO46766 at dilution of 1:100.



Immunofluorescent analysis of HepG2 cells using PACO46766 at dilution of 1:100 and Alexa Fluor 488-conjugated AffiniPure Goat Anti-Rabbit IgG(H+L).



Immunohistochemistry of paraffin-embedded human brain tissue using PACO46766 at dilution of 1:100.