

MTERF4 Antibody



PACO46738

Product Information

Size:

50ug

Reactivity:

Human, Mouse

Source:

Rabbit

Isotype:

IgG

Applications:

ELISA, WB, IHC, IF

Recommended dilutions:

ELISA:1:2000-1:10000, WB:1:1000-1:5000,
IHC:1:20-1:200, IF:1:50-1:200

Protein Background:

Regulator of mitochondrial ribosome biogenesis and translation. Binds to mitochondrial ribosomal RNAs 16S, 12S and 7S and targets NSUN4 RNA methyltransferase to the mitochondrial large ribosomal subunit (39S).

Gene ID:

MTERF4

Uniprot

Q7Z6M4

Synonyms:

Transcription termination factor 4, mitochondrial (Mitochondrial transcription termination factor 4) (mTERF domain-containing protein 2) [Cleaved into: mTERF domain-containing protein 2 processed], MTERF4, MTERFD2

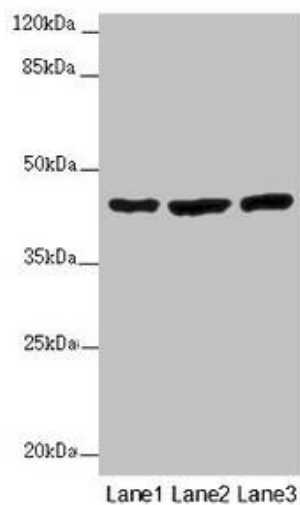
Immunogen:

Recombinant Human Transcription termination factor 4, mitochondrial protein (45-87AA).

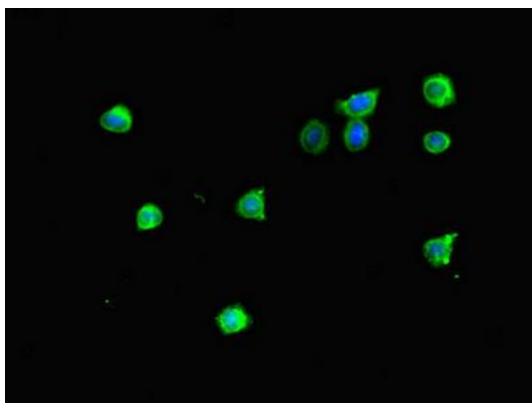
Storage:

Preservative: 0.03% Proclin 300. Constituents: 50% Glycerol, 0.01M PBS, PH 7.4

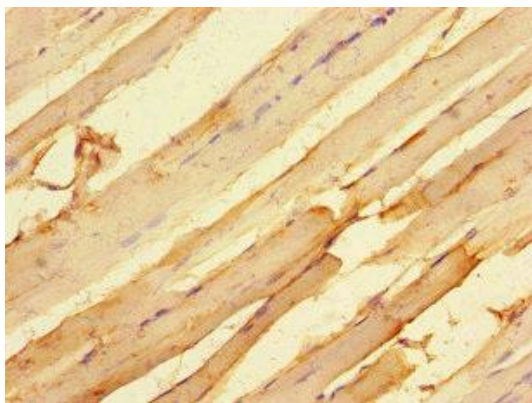
Product Images



Western blot. All lanes: MTERF4 antibody at 2 μ g/ml. Lane 1: Mouse kidney tissue. Lane 2: HL60 whole cell lysate. Lane 3: A549 whole cell lysate. Secondary. Goat polyclonal to rabbit IgG at 1/10000 dilution. Predicted band size: 44 kDa. Observed band size: 44 kDa.



Immunofluorescent analysis of HepG2 cells using PACO46738 at dilution of 1:100 and Alexa Fluor 488-conjugated AffiniPure Goat Anti-Rabbit IgG(H+L).



Immunohistochemistry of paraffin-embedded human skeletal muscle tissue using PACO46738 at dilution of 1:100.