

# TECPR1 Antibody



PACO46730

---

## Product Information

**Size:**

50ug

**Reactivity:**

Human

**Source:**

Rabbit

**Isotype:**

IgG

**Applications:**

ELISA, IHC, IF

**Recommended dilutions:**

ELISA:1:2000-1:10000, IHC:1:20-1:200,  
IF:1:50-1:200

**Protein Background:**

Tethering factor involved in autophagy. Involved in autophagosome maturation by promoting the autophagosome fusion with lysosomes: acts by associating with both the ATG5-ATG12 conjugate and phosphatidylinositol-3-phosphate (PtdIns(3)P) present at the surface of autophagosomes. Also involved in selective autophagy against bacterial pathogens, by being required for phagophore/preautophagosomal structure biogenesis and maturation.

**Gene ID:**

TECPR1

**Uniprot**

Q7Z6L1

**Synonyms:**

Tectonin beta-propeller repeat-containing protein 1, TECPR1, KIAA1358

**Immunogen:**

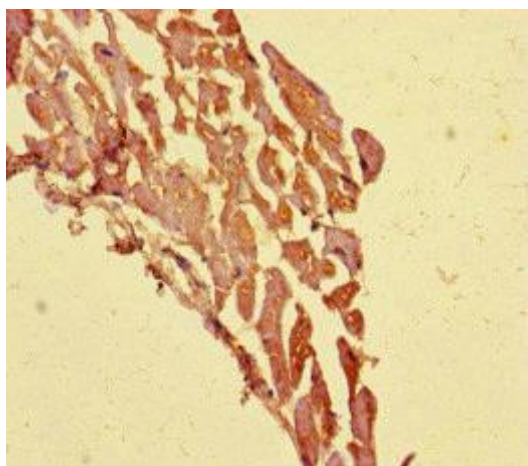
Recombinant Human Tectonin beta-propeller repeat-containing protein 1 protein (199-487AA).

**Storage:**

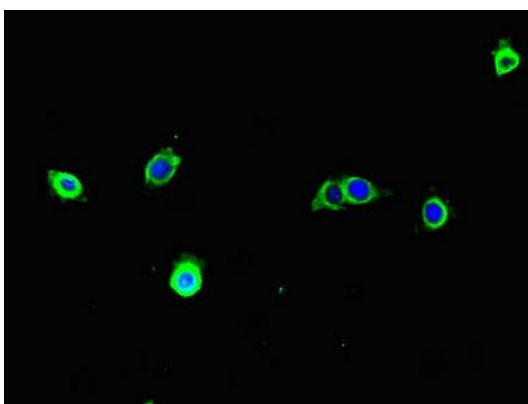
Preservative: 0.03% Proclin 300. Constituents: 50% Glycerol, 0.01M PBS, PH 7.4

## Product Images

---



Immunohistochemistry of paraffin-embedded human heart tissue using PACO46730 at dilution of 1:100.



Immunofluorescent analysis of A375 cells using PACO46730 at dilution of 1:100 and Alexa Fluor 488-conjugated AffiniPure Goat Anti-Rabbit IgG(H+L).