

FRMD5 Antibody



PACO46726

Product Information

Size:

50ug

Reactivity:

Human, Mouse

Source:

Rabbit

Isotype:

IgG

Applications:

ELISA, WB, IHC, IF

Recommended dilutions:

ELISA:1:2000-1:10000, WB:1:1000-1:5000,
IHC:1:20-1:200, IF:1:50-1:200

Protein Background:

Gene ID:

FRMD5

Uniprot

Q7Z6J6

Synonyms:

FERM domain-containing protein 5, FRMD5

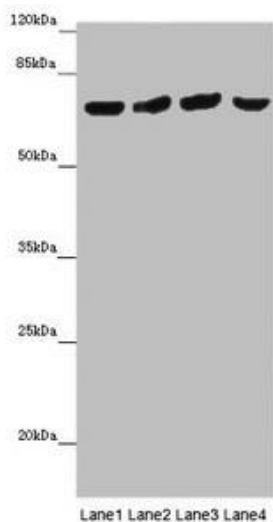
Immunogen:

Recombinant Human FERM domain-containing protein 5 protein (295-504AA).

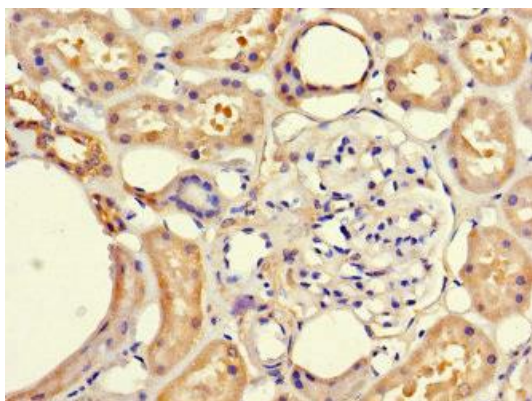
Storage:

Preservative: 0.03% Proclin 300. Constituents: 50% Glycerol, 0.01M PBS, PH 7.4

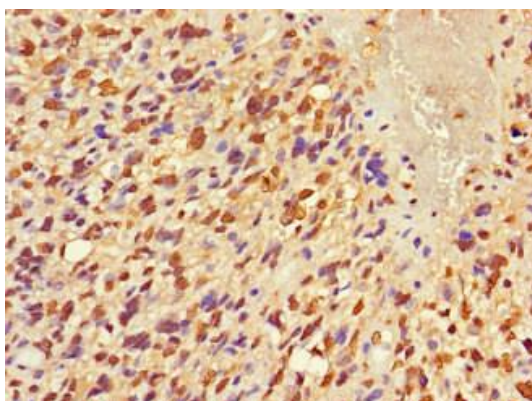
Product Images



Western blot. All lanes: FRMD5 antibody at 16 $\mu\text{g/ml}$. Lane 1: Mouse kidney tissue. Lane 2: Mouse heart tissue. Lane 3: Mouse skeletal muscle tissue. Lane 4: Mouse lung tissue. Secondary: Goat polyclonal to rabbit IgG at 1/10000 dilution. Predicted band size: 66, 64 kDa. Observed band size: 65 kDa.



Immunohistochemistry of paraffin-embedded human kidney tissue using PACO46726 at dilution of 1:100.



Immunohistochemistry of paraffin-embedded human glioma using PACO46726 at dilution of 1:100.