

PACO46714

---

## Product Information

**Size:**

50ug

**Reactivity:**

Human

**Source:**

Rabbit

**Isotype:**

IgG

**Applications:**

ELISA, IHC, IF

**Recommended dilutions:**

ELISA:1:2000-1:10000, IHC:1:20-1:200,  
IF:1:50-1:200

**Protein Background:**

As part of the NSL complex it is involved in acetylation of nucleosomal histone H4 on several lysine residues and therefore may be involved in the regulation of transcription.

**Gene ID:**

KANSL1

**Uniprot**

Q7Z3B3

**Synonyms:**

KAT8 regulatory NSL complex subunit 1 (MLL1/MLL complex subunit KANSL1) (MSL1 homolog 1) (hMSL1v1) (NSL complex protein NSL1) (Non-specific lethal 1 homolog), KANSL1, CENP-36 KIAA1267 MSL1V1 NSL1

**Immunogen:**

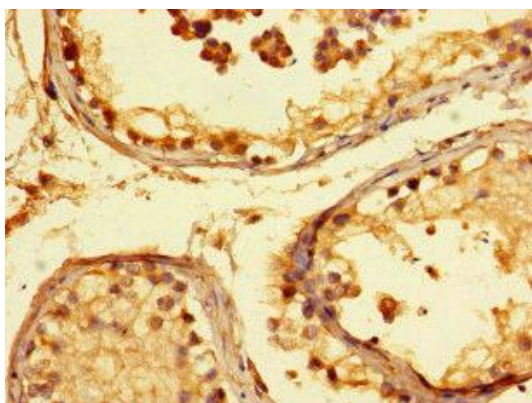
Recombinant Human KAT8 regulatory NSL complex subunit 1 protein (815-1086AA).

**Storage:**

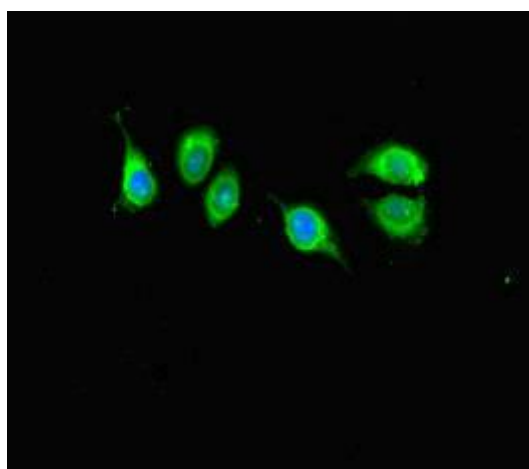
Preservative: 0.03% Proclin 300. Constituents: 50% Glycerol, 0.01M PBS, PH 7.4

## Product Images

---



Immunohistochemistry of paraffin-embedded human testis tissue using PACO46714 at dilution of 1:100.



Immunofluorescent analysis of A549 cells using PACO46714 at dilution of 1:100 and Alexa Fluor 488-conjugated AffiniPure Goat Anti-Rabbit IgG(H+L).