

PACO46686

---

## Product Information

**Size:**

50ug

**Reactivity:**

Human

**Source:**

Rabbit

**Isotype:**

IgG

**Applications:**

ELISA, IHC, IF

**Recommended dilutions:**

ELISA:1:2000-1:10000, IHC:1:20-1:200,  
IF:1:50-1:200

**Protein Background:**

Probably involved in thrombopoiesis. Plays a role in the development or secretion of alpha-granules, that contain several growth factors important for platelet biogenesis.

**Gene ID:**

NBEAL2

**Uniprot**

Q6ZNJ1

**Synonyms:**

Neurobeachin-like protein 2, NBEAL2, KIAA0540

**Immunogen:**

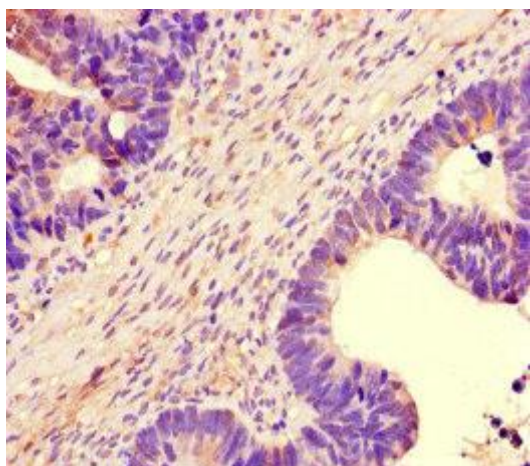
Recombinant Human Neurobeachin-like protein 2 protein (1360-1574AA).

**Storage:**

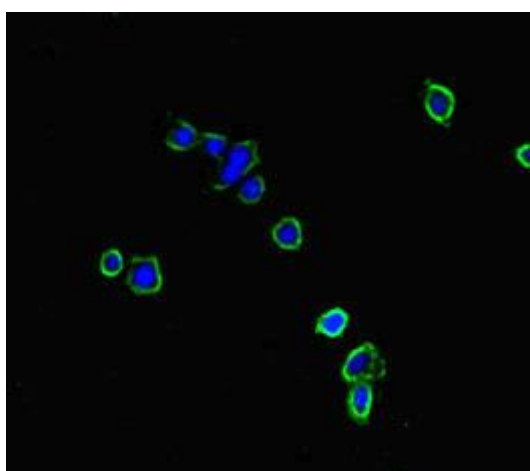
Preservative: 0.03% Proclin 300. Constituents: 50% Glycerol, 0.01M PBS, PH 7.4

## Product Images

---



Immunohistochemistry of paraffin-embedded human ovarian cancer using PACO46686 at dilution of 1:100.



Immunofluorescent analysis of HepG2 cells using PACO46686 at dilution of 1:100 and Alexa Fluor 488-conjugated AffiniPure Goat Anti-Rabbit IgG(H+L).