

RABGAP1L Antibody



PACO46622

Product Information

Size:

50ug

Reactivity:

Human, Mouse

Source:

Rabbit

Isotype:

IgG

Applications:

ELISA, WB, IHC

Recommended dilutions:

ELISA:1:2000-1:10000, WB:1:2000-1:10000,
IHC:1:20-1:200

Protein Background:

Gene ID:

RABGAP1L

Uniprot

B7ZAP0

Synonyms:

Rab GTPase-activating protein 1-like, isoform 10, RABGAP1L, HHL KIAA0471

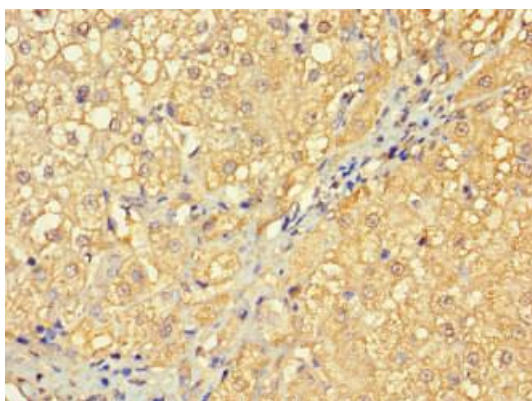
Immunogen:

Recombinant Human Rab GTPase-activating protein 1-like, isoform 10 protein (11-262AA).

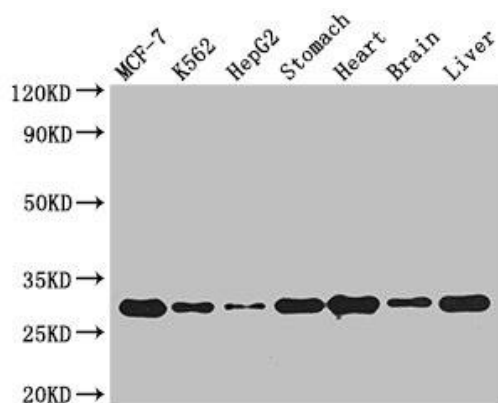
Storage:

Preservative: 0.03% Proclin 300. Constituents: 50% Glycerol, 0.01M PBS, PH 7.4

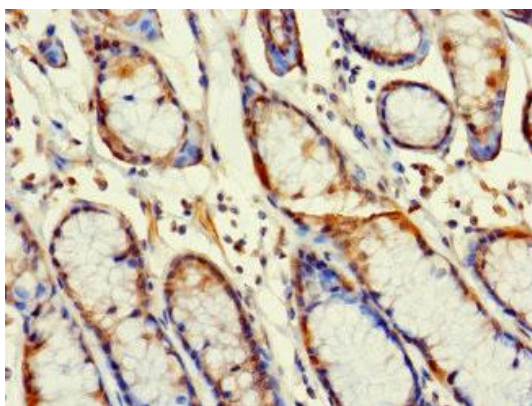
Product Images



Immunohistochemistry of paraffin-embedded human liver cancer using PACO46622 at dilution of 1:100.



Western Blot. Positive WB detected in: MCF-7 whole cell lysate, K562 whole cell lysate, HepG2 whole cell lysate, Mouse stomach tissue, Mouse heart tissue, Mouse brain tissue, Mouse liver tissue. All lanes: RABGAP1L antibody at 3 μ g/ml. Secondary. Goat polyclonal to rabbit IgG at 1/50000 dilution. Predicted band size: 30, 93, 69, 95, 91, 44, 42, 43, 9 kDa. Observed band size: 30 kDa.



Immunohistochemistry of paraffin-embedded human gastric cancer using PACO46622 at dilution of 1:100.