

# CRB2 Antibody



PACO46586

---

## Product Information

**Size:**

50ug

**Reactivity:**

Human

**Source:**

Rabbit

**Isotype:**

IgG

**Applications:**

ELISA, IHC

**Recommended dilutions:**

ELISA:1:2000-1:10000, IHC:1:1000-1:2000

**Protein Background:**

May play a role in polarized cells morphogenesis.

**Gene ID:**

CRB2

**Uniprot**

Q5IJ48

**Synonyms:**

Protein crumbs homolog 2 (Crumbs-like protein 2), CRB2

**Immunogen:**

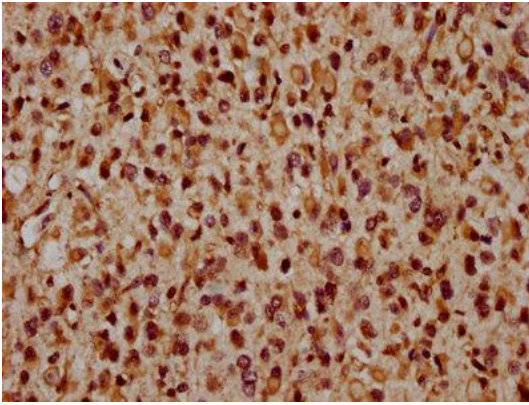
Recombinant Human Protein crumbs homolog 2 protein (253-483AA).

**Storage:**

Preservative: 0.03% Proclin 300. Constituents: 50% Glycerol, 0.01M PBS, PH 7.4

## Product Images

---



IHC image of PACO46586 diluted at 1:1600 and staining in paraffin-embedded human glioma performed on a Leica Bond™ system. After dewaxing and hydration, antigen retrieval was mediated by high pressure in a citrate buffer (pH 6.0). Section was blocked with 10% normal goat serum 30min at RT. Then primary antibody (1% BSA) was incubated at 4°C overnight. The primary is detected by a biotinylated secondary antibody and visualized using an HRP conjugated SP system.