

PACO46574

Product Information

Size:

50ug

Reactivity:

Human

Source:

Rabbit

Isotype:

IgG

Applications:

ELISA, IHC, IF

Recommended dilutions:

ELISA:1:2000-1:10000, IHC:1:20-1:200,
IF:1:50-1:200

Protein Background:

The RIC1-RGP1 complex acts as a guanine nucleotide exchange factor (GEF), which activates RAB6A by exchanging bound GDP for free GTP and may thereby be required for efficient fusion of endosome-derived vesicles with the Golgi compartment. The RIC1-RGP1 complex participates in the recycling of mannose-6-phosphate receptors. Required for phosphorylation and localization of GJA1.

Gene ID:

RIC1

Uniprot

Q4ADV7

Synonyms:

RAB6A-GEF complex partner protein 1 (Connexin-43-interacting protein of 150 kDa) (Protein RIC1 homolog), RIC1, CIP150 KIAA1432

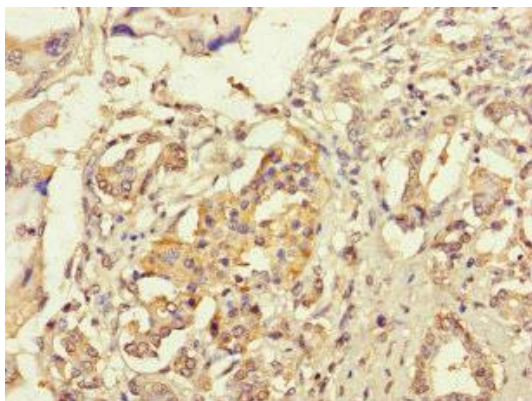
Immunogen:

Recombinant Human RAB6A-GEF complex partner protein 1 protein (951-1233AA).

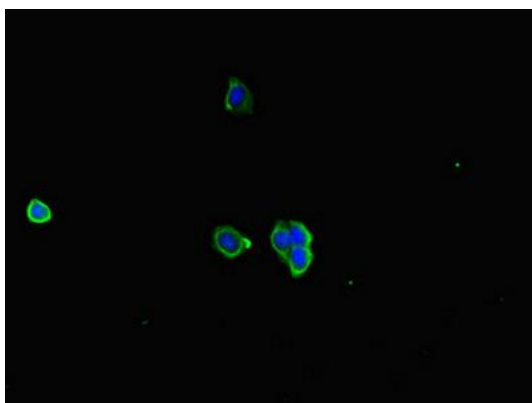
Storage:

Preservative: 0.03% Proclin 300. Constituents: 50% Glycerol, 0.01M PBS, PH 7.4

Product Images



Immunohistochemistry of paraffin-embedded human pancreatic cancer using PACO46574 at dilution of 1:100.



Immunofluorescent analysis of HepG2 cells using PACO46574 at dilution of 1:100 and Alexa Fluor 488-conjugated AffiniPure Goat Anti-Rabbit IgG(H+L).