

PACO46570

Product Information

Size:

50ug

Reactivity:

Human, Mouse

Source:

Rabbit

Isotype:

IgG

Applications:

ELISA, WB, IHC, IF

Recommended dilutions:

ELISA:1:2000-1:10000, WB:1:1000-1:5000,
IHC:1:20-1:200, IF:1:50-1:200

Protein Background:

Has no detectable ceramide-kinase activity. Overexpression of CERKL protects cells from apoptosis in oxidative stress conditions.

Gene ID:

CERKL

Uniprot

Q49MI3

Synonyms:

Ceramide kinase-like protein, CERKL

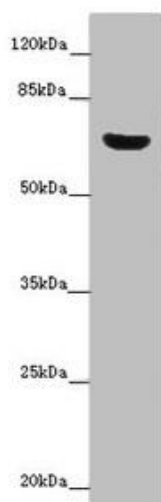
Immunogen:

Recombinant Human Ceramide kinase-like protein (1-558AA).

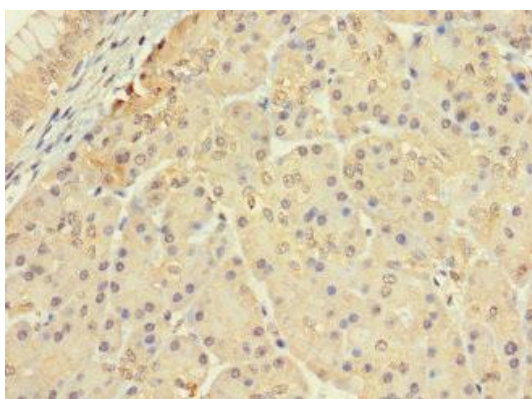
Storage:

Preservative: 0.03% Proclin 300. Constituents: 50% Glycerol, 0.01M PBS, PH 7.4

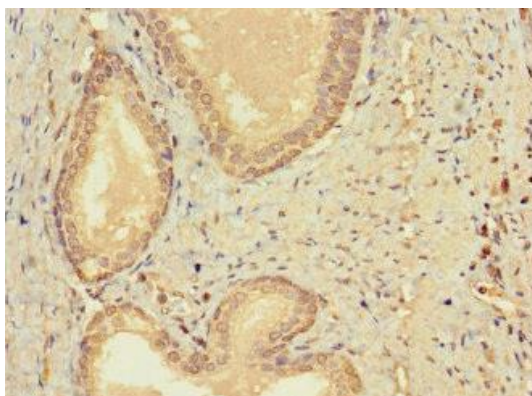
Product Images



Western blot. All lanes: CERKL antibody at 14 $\mu\text{g/ml}$ + Mouse lung tissue. Secondary. Goat polyclonal to rabbit IgG at 1/10000 dilution. Predicted band size: 63, 60, 53, 48, 43, 25, 20, 58 kDa. Observed band size: 63 kDa.



Immunohistochemistry of paraffin-embedded human pancreatic tissue using PACO46570 at dilution of 1:100.



Immunohistochemistry of paraffin-embedded human prostate cancer using PACO46570 at dilution of 1:100.