

PACO46546

Product Information

Size:

50ug

Reactivity:

Human, Mouse

Source:

Rabbit

Isotype:

IgG

Applications:

ELISA, WB, IHC, IF

Recommended dilutions:

ELISA:1:2000-1:10000, WB:1:1000-1:5000,
IHC:1:20-1:200, IF:1:50-1:200

Protein Background:

Catalyzes the cleavage of L-kynurenine (L-Kyn) and L-3-hydroxykynurenine (L-3OHKyn) into anthranilic acid, (AA) and 3-hydroxyanthranilic acid, (3-OHAA), respectively. Has a preference for the L-3-hydroxy form. Also has cysteine-conjugate-beta-lyase activity.

Gene ID:

KYNU

Uniprot

Q16719

Synonyms:

Kynureninase (EC 3.7.1.3) (L-kynurenine hydrolase), KYNU

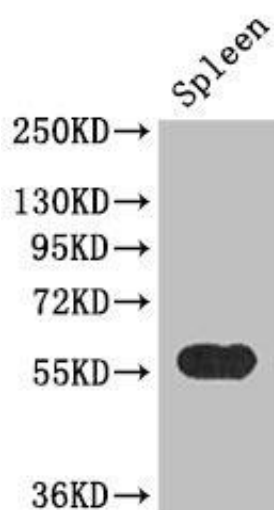
Immunogen:

Recombinant Human Kynureninase protein (99-214AA).

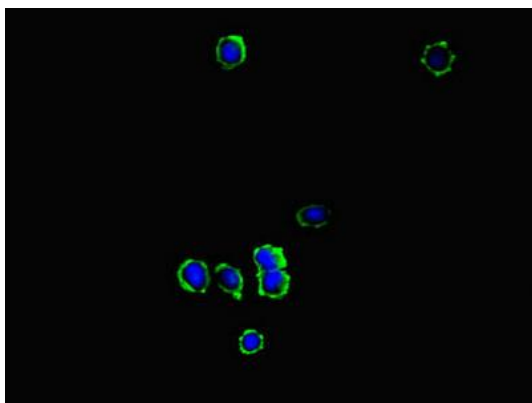
Storage:

Preservative: 0.03% Proclin 300. Constituents: 50% Glycerol, 0.01M PBS, PH 7.4

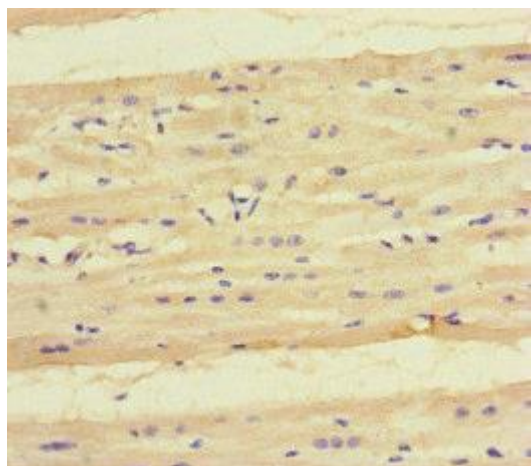
Product Images



Western Blot. Positive WB detected in: Mouse spleen tissue. All lanes: KYNU antibody at 3.4 μ g/ml. Secondary. Goat polyclonal to rabbit IgG at 1/50000 dilution. Predicted band size: 52, 35 kDa. Observed band size: 52 kDa.



Immunofluorescent analysis of MCF-7 cells using PACO46546 at dilution of 1:100 and Alexa Fluor 488-conjugated AffiniPure Goat Anti-Rabbit IgG(H+L).



Immunohistochemistry of paraffin-embedded human heart tissue using PACO46546 at dilution of 1:100.