

# LPAL2 Antibody



PACO46518

---

## Product Information

**Size:**

50ug

**Reactivity:**

Human

**Source:**

Rabbit

**Isotype:**

IgG

**Applications:**

ELISA, IHC, IF

**Recommended dilutions:**

ELISA:1:2000-1:10000, IHC:1:20-1:200,  
IF:1:50-1:200

**Protein Background:**

**Gene ID:**

LPAL2

**Uniprot**

Q16609

**Synonyms:**

Putative apolipoprotein(a)-like protein 2 (Apo(a)-like protein 2) (Lp(a)-liker protein 2) (Apolipoprotein a-related gene C protein) (Apo(a)rg-C), LPAL2, APOARGC

**Immunogen:**

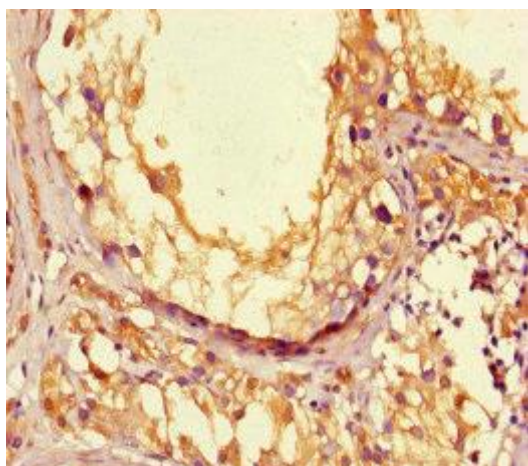
Recombinant Human Putative apolipoprotein(a)-like protein 2 protein (52-124AA).

**Storage:**

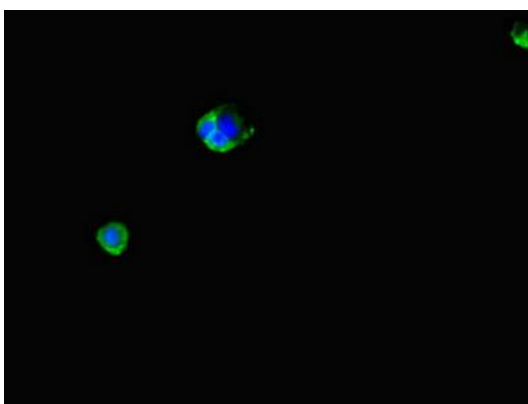
Preservative: 0.03% Proclin 300. Constituents: 50% Glycerol, 0.01M PBS, PH 7.4

## Product Images

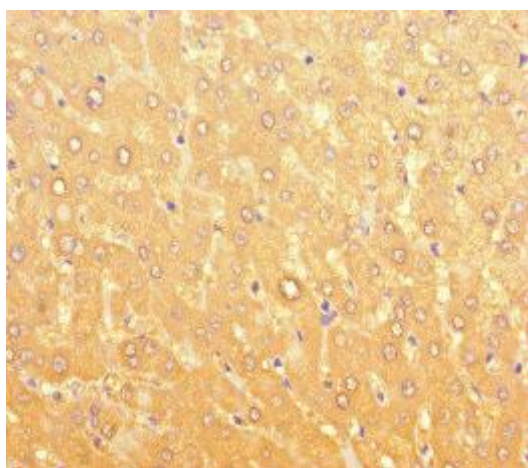
---



Immunohistochemistry of paraffin-embedded human testis tissue using PACO46518 at dilution of 1:100.



Immunofluorescent analysis of MCF-7 cells using PACO46518 at dilution of 1:100 and Alexa Fluor 488-conjugated AffiniPure Goat Anti-Rabbit IgG(H+L).



Immunohistochemistry of paraffin-embedded human liver tissue using PACO46518 at dilution of 1:100.