

PACO46506

Product Information

Size:

50ug

Reactivity:

Human

Source:

Rabbit

Isotype:

IgG

Applications:

ELISA, IHC, IF

Recommended dilutions:

ELISA:1:2000-1:10000, IHC:1:20-1:200,
IF:1:50-1:200

Protein Background:

Involved in the unfolded protein response (UPR) during endoplasmic reticulum (ER) stress. Acts as a negative regulator of the EIF2AK4/GCN2 kinase activity by preventing the phosphorylation of eIF-2-alpha at 'Ser-52' and hence attenuating general protein synthesis under ER stress, hypothermic and amino acid, starving stress conditions. Co-chaperone of HSPA8/HSC70, it stimulates its ATPase activity. May inhibit both the autophosphorylation of EIF2AK2/PKR and the ability of EIF2AK2 to catalyze phosphorylation of the EIF2A. May inhibit EIF2AK3/PERK activity.

Gene ID:

DNAJC3

Uniprot

Q13217

Synonyms:

DnaJ homolog subfamily C member 3 (Endoplasmic reticulum DNA J domain-containing protein 6) (ER-resident protein ERdj6) (ERdj6) (Interferon-induced, double-stranded RNA-activated protein kinase inhibitor) (Protein kinase inhibitor of 58 kDa) (Protein kinase inhibitor p58), DNAJC3, P58IPK PRKRI

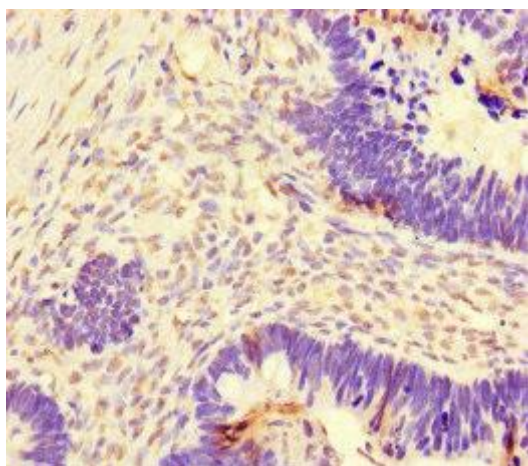
Immunogen:

Recombinant Human DnaJ homolog subfamily C member 3 protein (277-496AA).

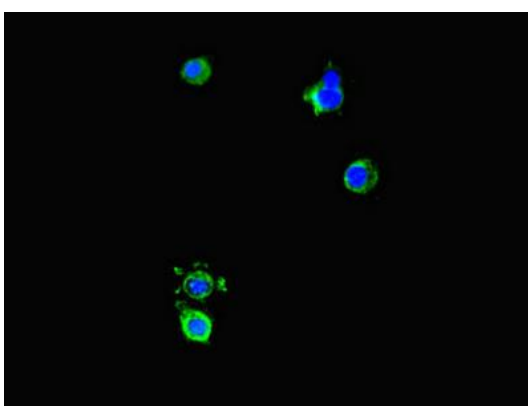
Storage:

Preservative: 0.03% Proclin 300. Constituents: 50% Glycerol, 0.01M PBS, PH 7.4

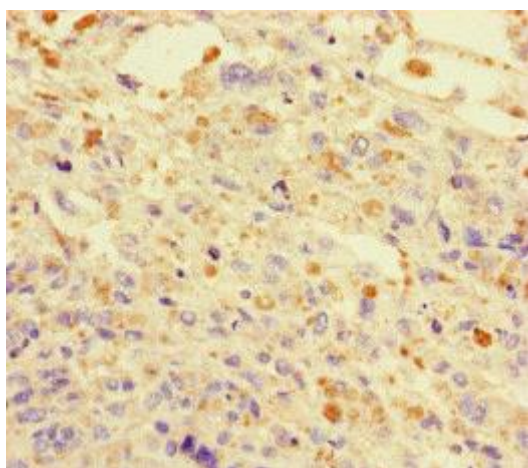
Product Images



Immunohistochemistry of paraffin-embedded human ovarian cancer using PACO46506 at dilution of 1:100.



Immunofluorescent analysis of HeLa cells using PACO46506 at dilution of 1:100 and Alexa Fluor 488-conjugated AffiniPure Goat Anti-Rabbit IgG(H+L).



Immunohistochemistry of paraffin-embedded human melanoma using PACO46506 at dilution of 1:100.